

APPENDIX I2

Meeting with City of Timmins – January 24, 2024

Agenda

Northeastern Passenger Rail**City of Timmins**

Date: January 24, 2024

Time: 1:00 pm – 2:00pm

Location: Microsoft Teams

TOPIC**PRESENTER**

- | | |
|---|---------------------|
| 1. Round table introductions | All |
| 2. Introduce the Project/Environmental Assessment Scope | Amber Saltarelli |
| 3. Present initial concept design for Timmins-Porcupine Station | Catherine Voytenkov |
| a. Proposed Timmins-Porcupine project components | |
| b. Site Layout | |
| i. Vehicle access and circulation | |
| ii. Parking | |
| iii. Operations and Maintenance | |
| c. Drainage and Stormwater Management | |
| d. Utilities | |
| i. Electrical | |
| ii. IT and Telecommunications | |
| iii. Water (domestic and fire) | |
| iv. Sanitary sewer | |
| v. Storm sewer | |
| vi. Natural Gas | |
| e. Construction Impacts | |
| 4. Advanced Notice of Public Information Centre | Amber Saltarelli |
| 5. Questions & Discussion | All |

Display Boards/Panels



Welcome

Northlander Passenger Rail



City of Timmins Meeting #1
January 24, 2024

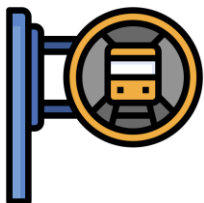
Introduction

Ontario Northland is reinstating passenger rail service between Toronto (Union Station) and Northeastern Ontario via the Northlander Passenger Rail Service. As per Option 2, in the Updated Initial Business Case, the reinstated Northlander will include passenger train service from Toronto to Timmins and will provide a rail connection from Timmins to Cochrane.



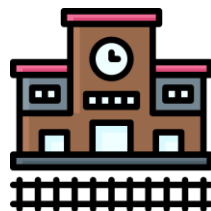
740km

of Rail Corridor



16

Station Stops



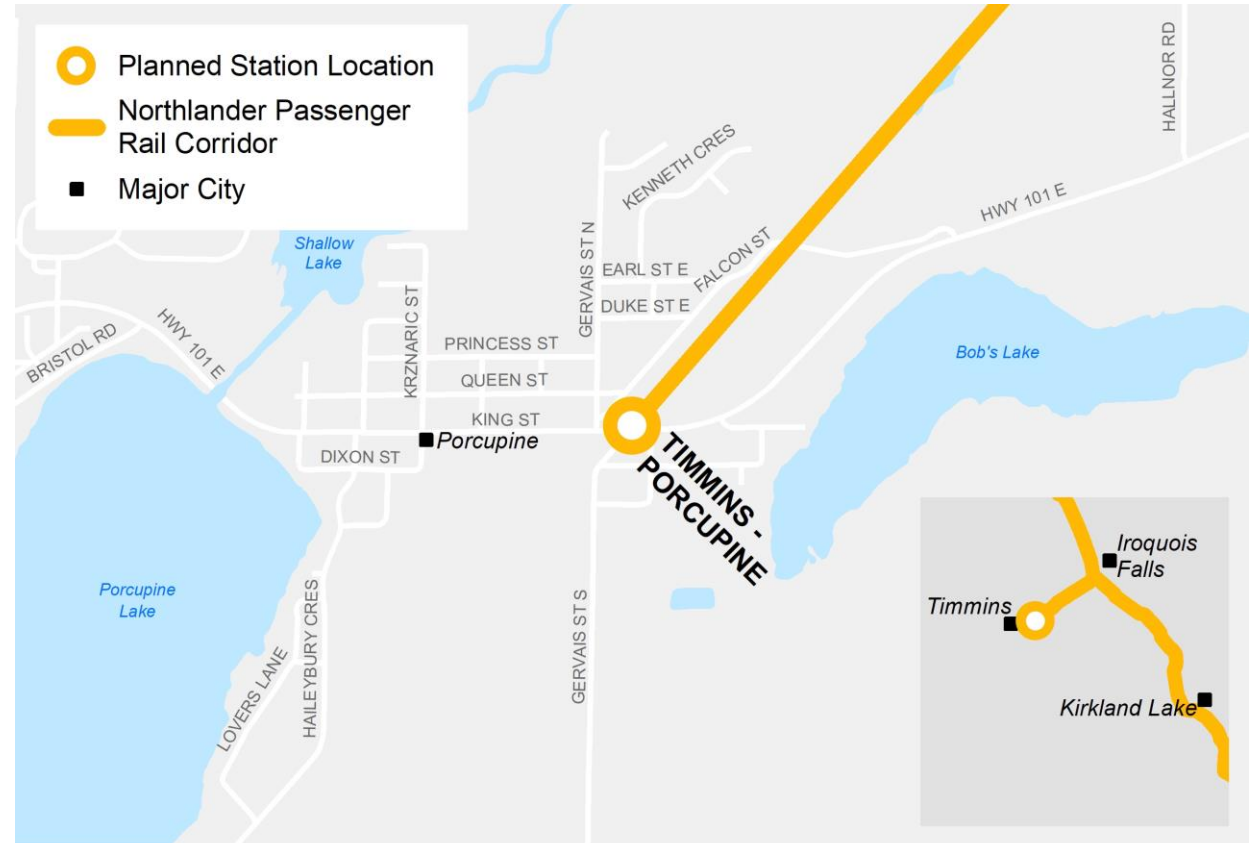
1

New Proposed
Station



Overview: New Timmins-Porcupine Station

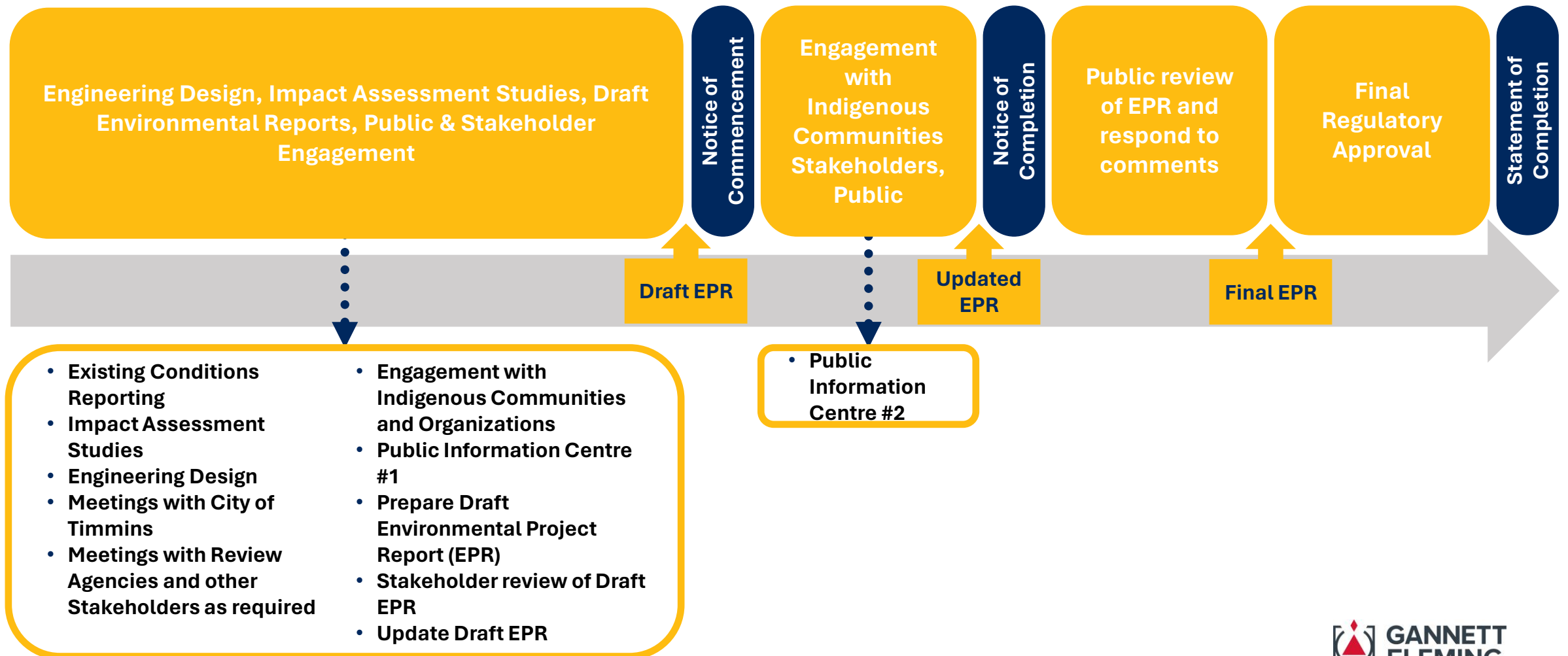
- The new station is situated along the existing rail corridor between Matheson Station and Cochrane Station, within the City of Timmins.



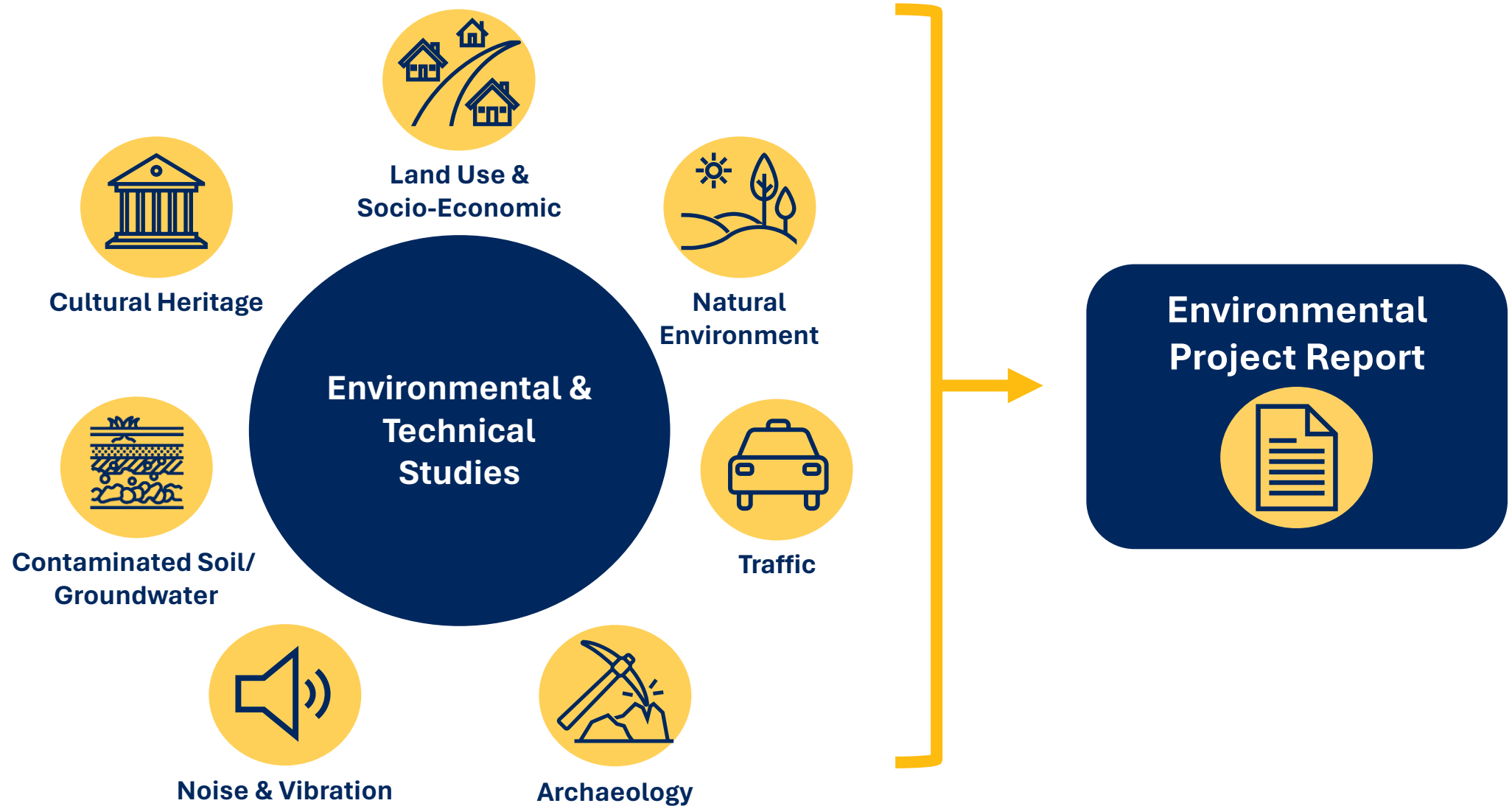
Map is for illustrative purposes.
Not to scale.

Environmental Assessment Process

Planning, Design and Environmental Assessment Process



Environmental Studies & Reporting



Proposed Timmins-Porcupine Station Elements

Project Component	Description
Train Station Platform	Train Station Platform features will include tactile warning strips, platform edge, and areas for Accessibility Cars to stop at the platform.
Station Building	Station Building features may include wicket for travel tickets and information, wicket for parcel drop-off/pick-up, waiting area, washroom, breakroom for crews and station staff.
Station Parking Facilities	Station Parking Facilities include features designated to accommodate accessibility, taxi stand, passenger pick-up/drop-off, general parking, employee parking.
Station Pedestrian Walkway	Station Pedestrian Walkway will be built around the station building, providing convenient access to various station elements.
Track Works	Track works will be confirmed through engineering design process.
Ontario Northland Bus Bays	Bus bays to be provided for a seamless connection to Ontario Northland motor coach services.
Municipal Bus Stop	Bus stop on the street to be provided for municipal bus service.
Bus Storage & Maintenance Facility	<i>*Protecting for land that may be required for potential future construction of a Bus Storage & Maintenance Facility.*</i>

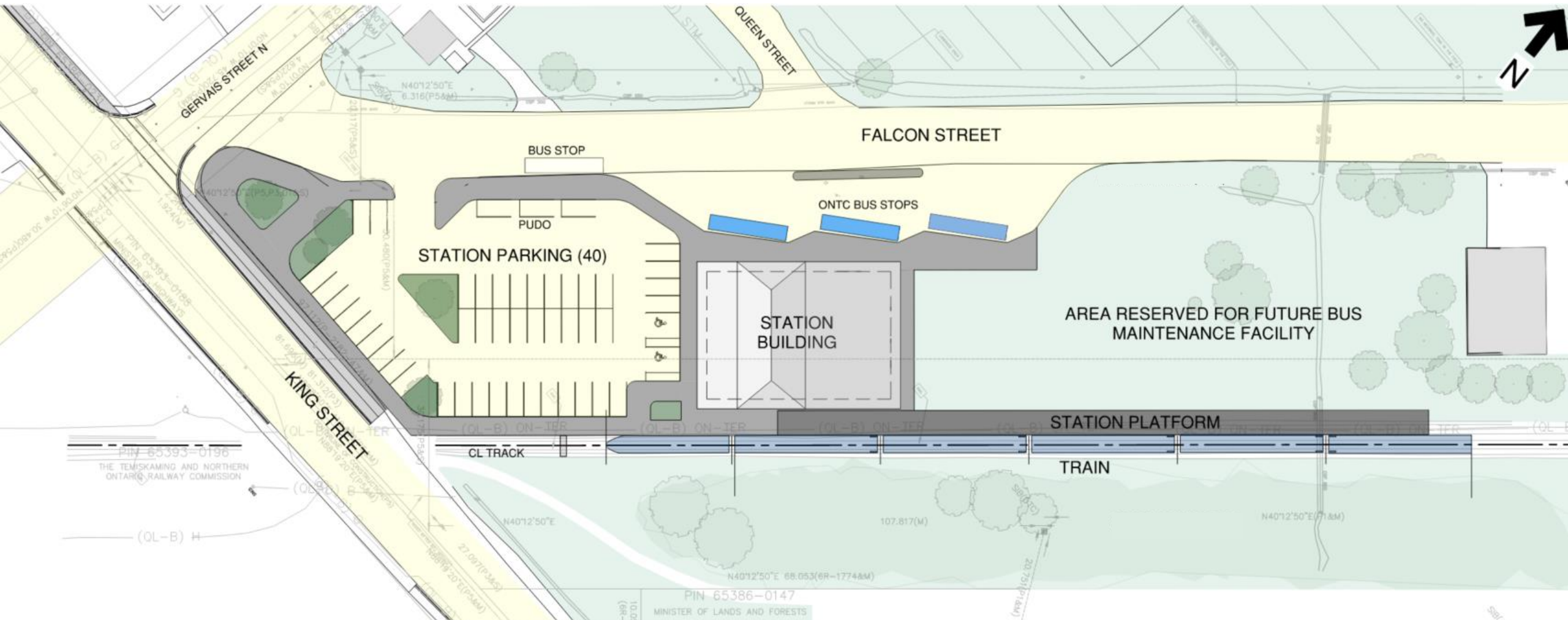


The map shows a preliminary study area for a proposed station. A red dashed line outlines the study area, which includes a yellow-shaded corridor. Key features include: Falcon Street running horizontally across the top; Gervais Street N and King Street running diagonally from the top-left to the bottom-left; Queen Street running vertically near the top; and an existing track running horizontally across the bottom. The area contains various green spaces with trees, a building on the right, and a north arrow in the top-right corner.

Proposed Timmins-Porcupine Station Preliminary Study Area

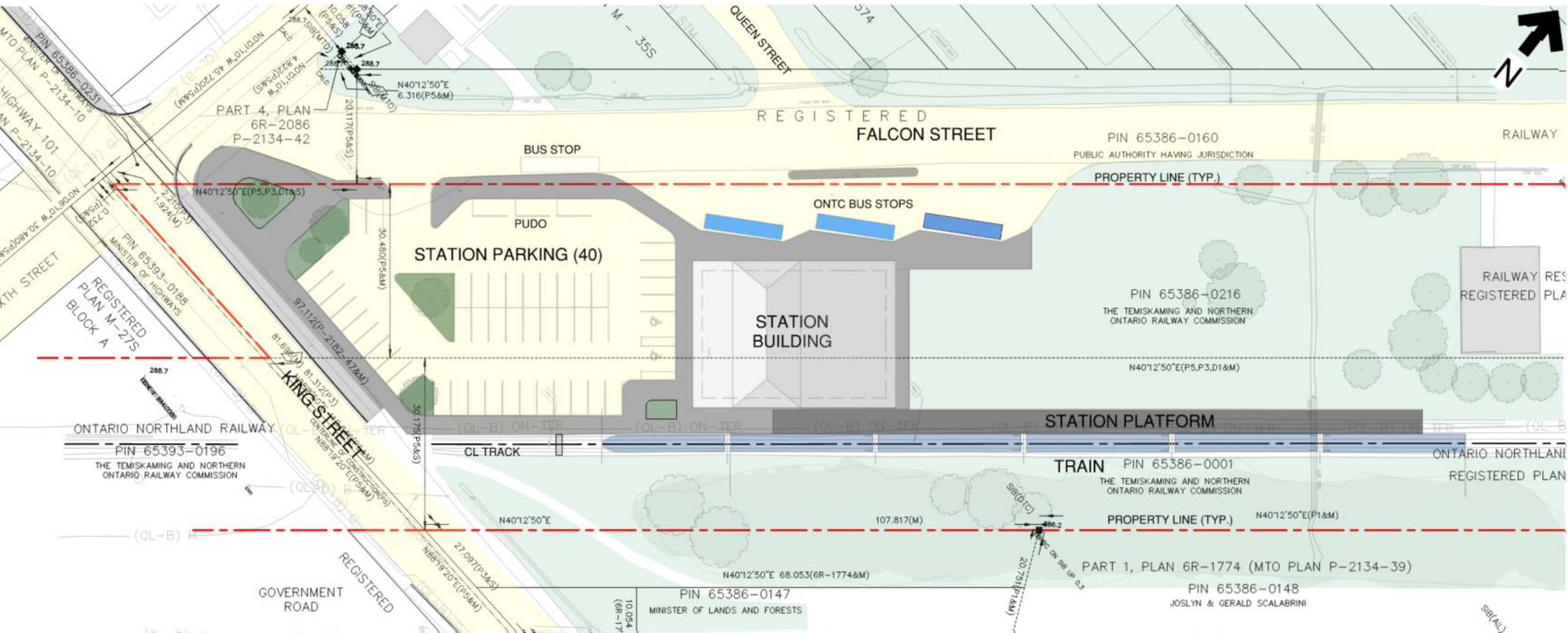
- City to identify planned capital studies/projects.
- City to identify applicable Municipal Plans, Policies, and other relevant information.

Proposed Timmins-Porcupine Station Conceptual Site Layout



- City to confirm Design Standards/Protocols.
- City to confirm Emergency, Maintenance and Transit Vehicles Specification for AutoTurn Analysis.

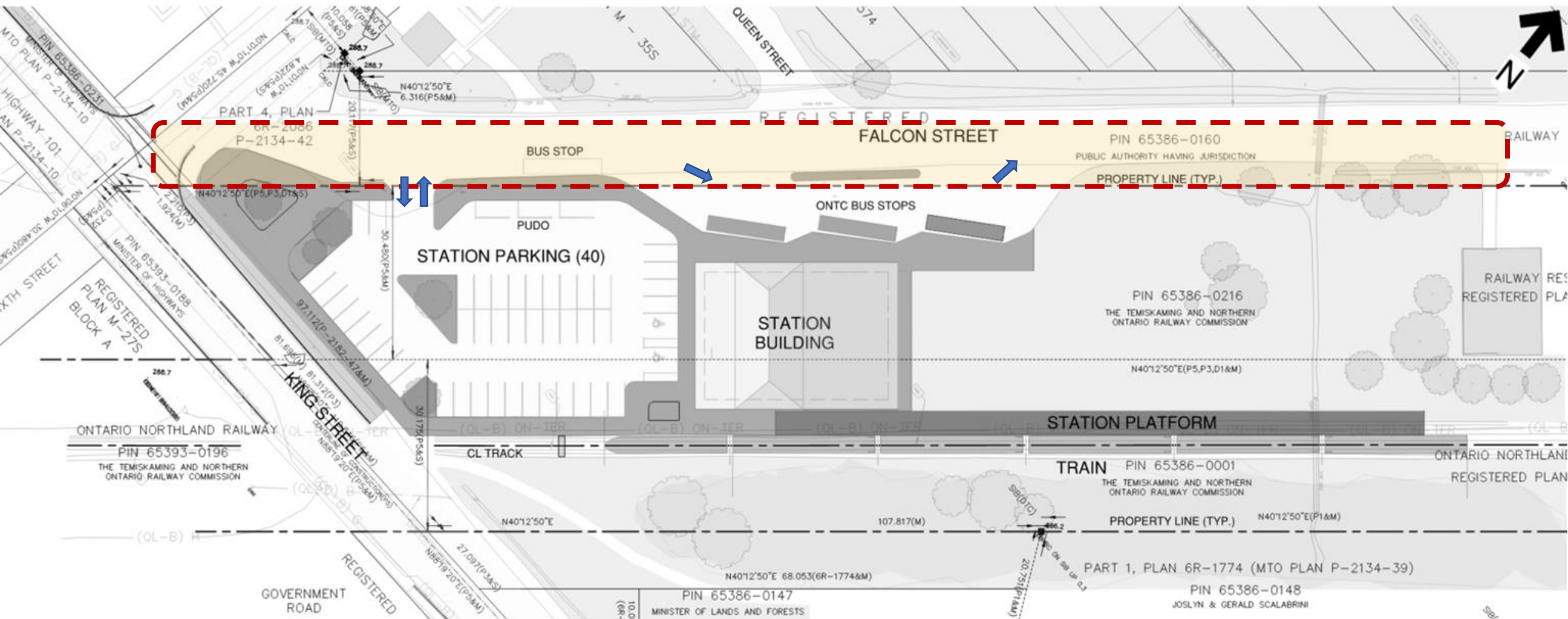
Proposed Timmins-Porcupine Station Property Considerations



A

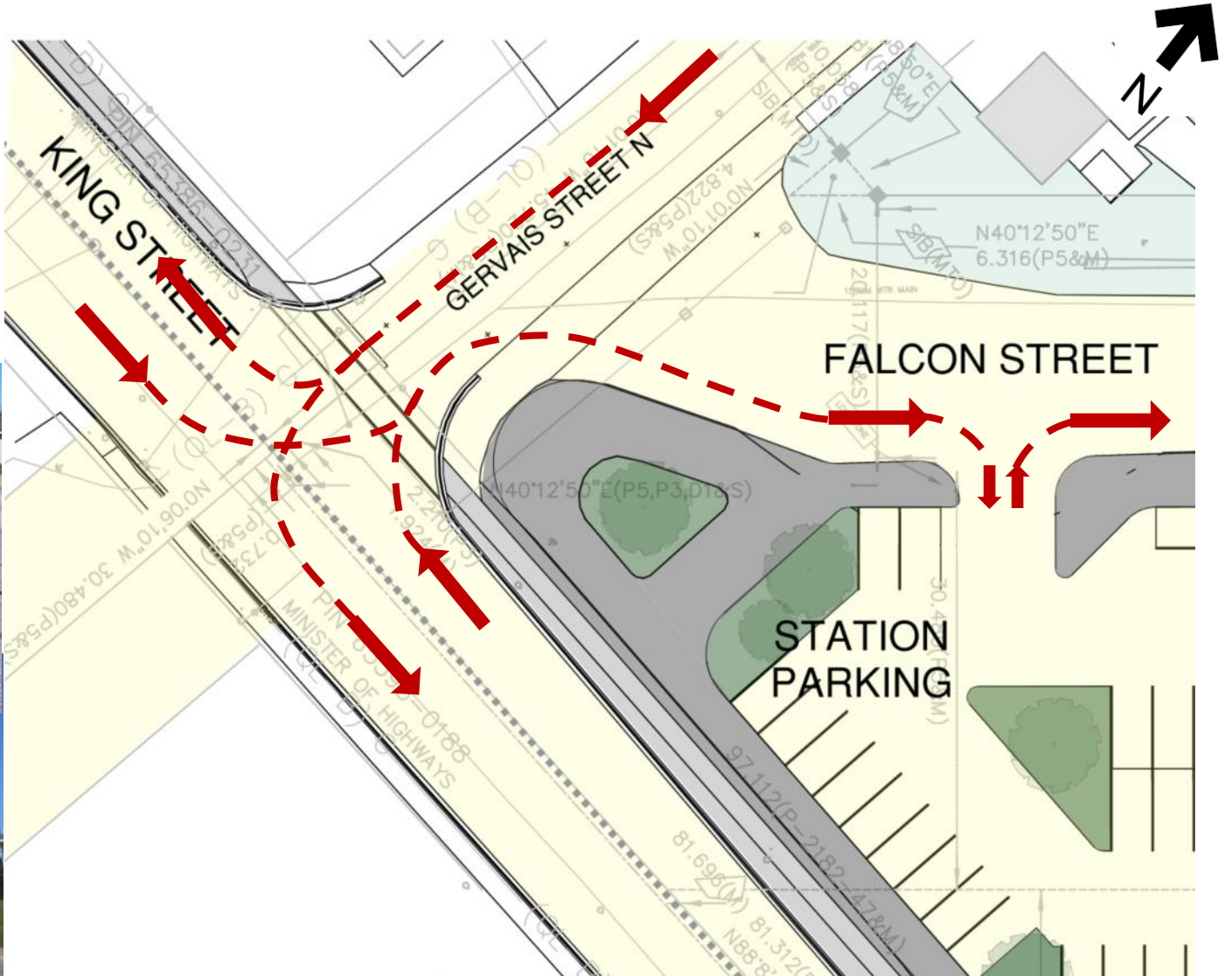
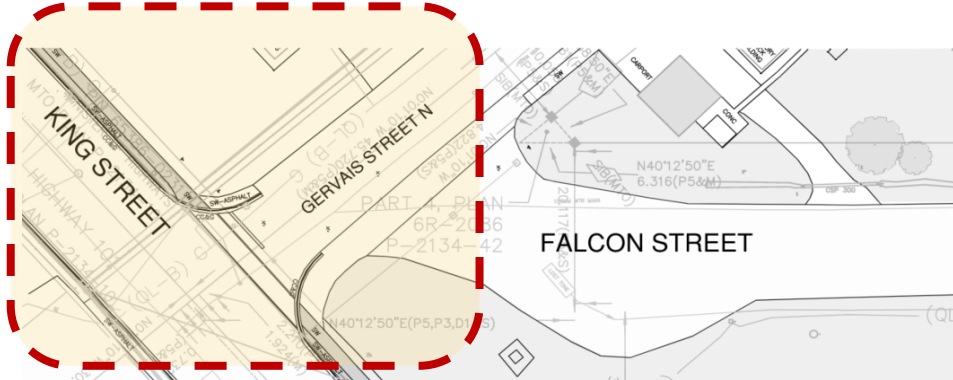


Proposed Timmins-Porcupine Station Access



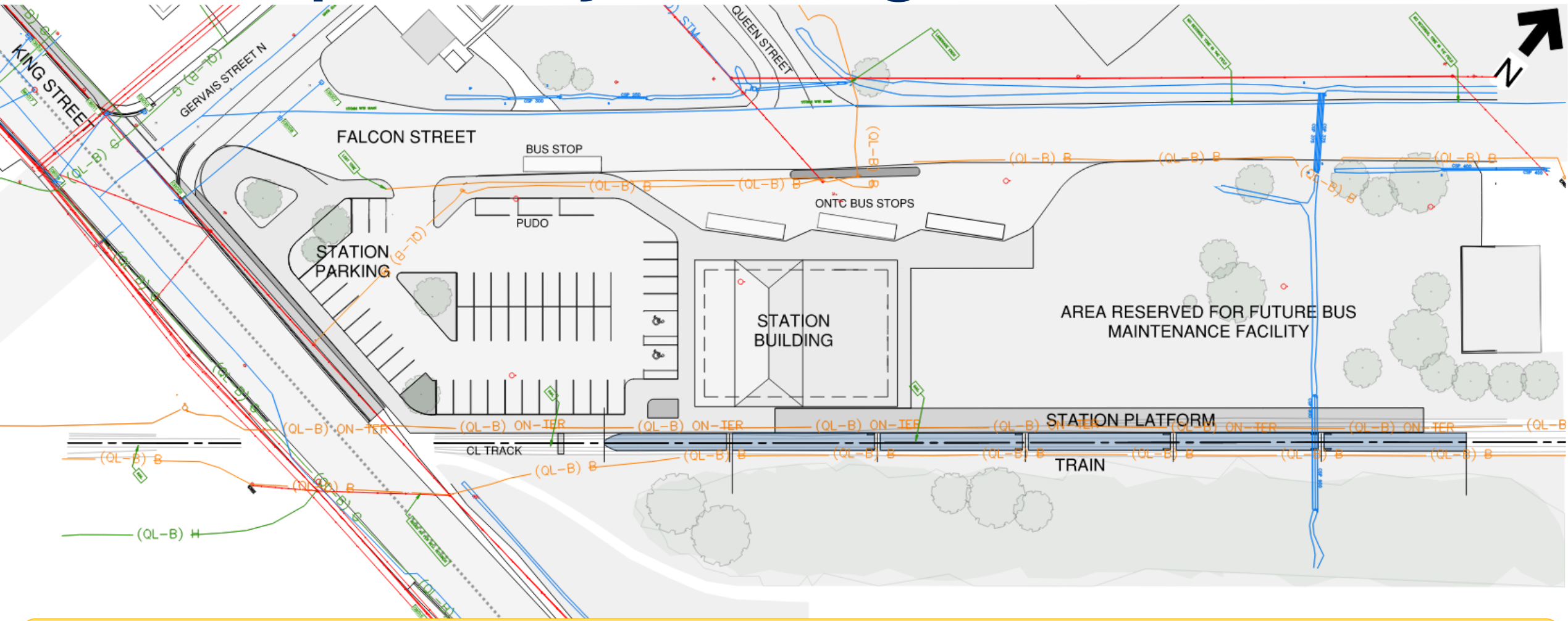
- City to confirm Operation and Maintenance requirements and needs.

Proposed Timmins-Porcupine Station Traffic Circulation



- Design is based on the assumption that buses will operate one-way on Falcon

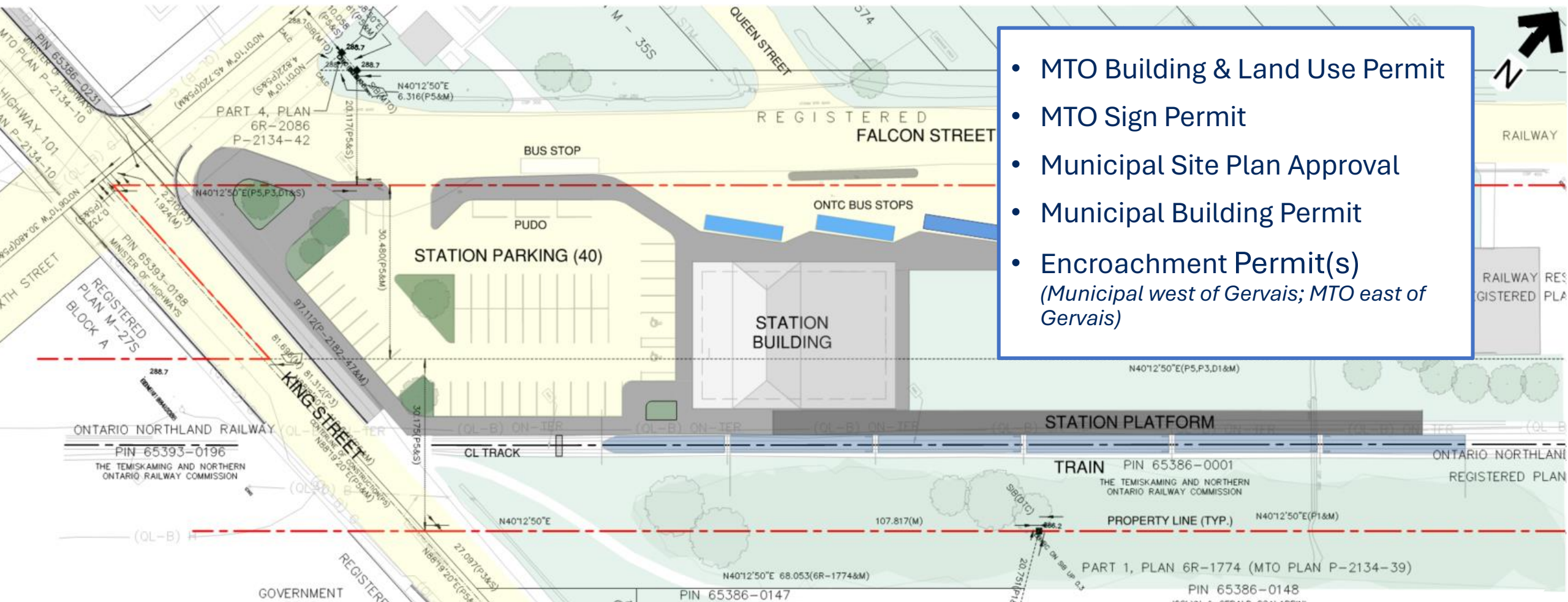
Proposed Timmins-Porcupine Station Municipal Utility Servicing



- City to identify any planned works in the study area.
- City to identify any concerns with existing drainage and stormwater management.
- City to confirm whether they can provide SWM models, GIS information (e.g., watermain and sanitary)

Proposed Timmins-Porcupine Station

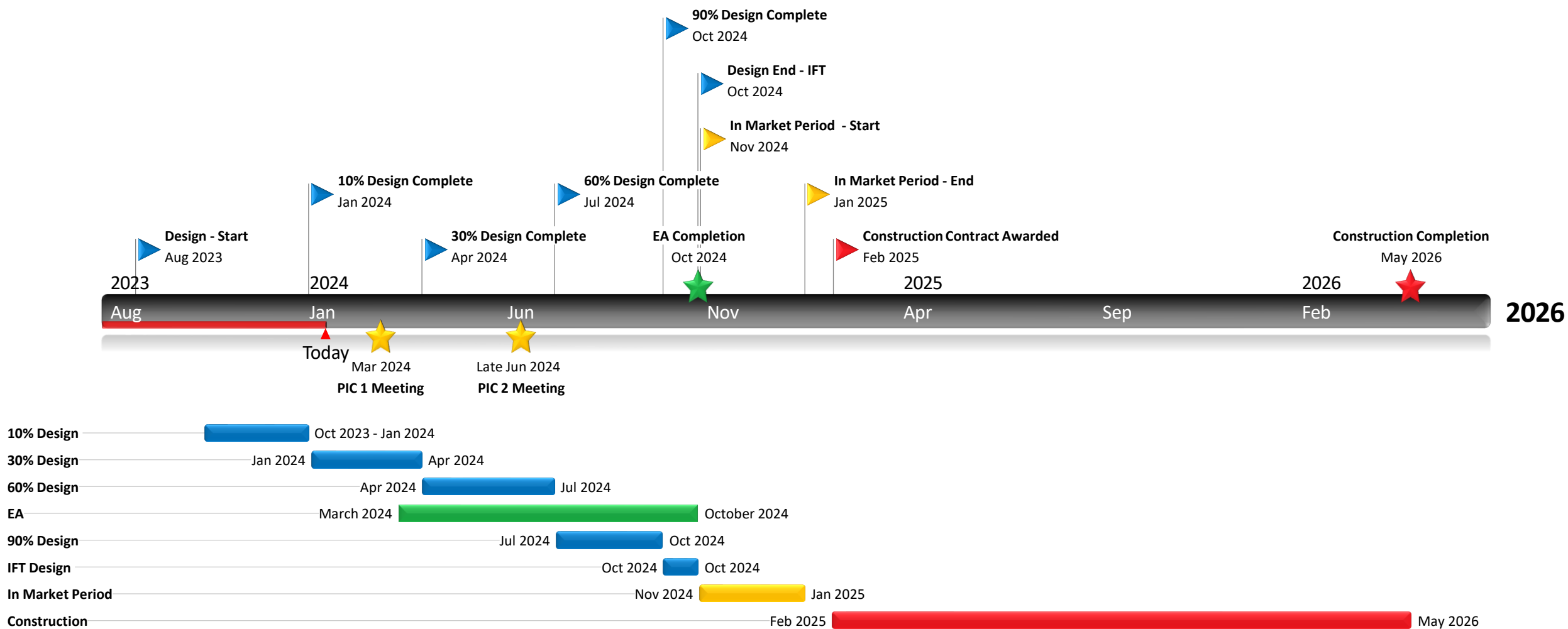
Permits, Licenses, Approvals



- MTO Building & Land Use Permit
- MTO Sign Permit
- Municipal Site Plan Approval
- Municipal Building Permit
- Encroachment Permit(s)
(Municipal west of Gervais; MTO east of Gervais)

- We understand that the Municipal SPA covers the municipal connection requirements. City to confirm.
 - City to confirm local stakeholders to consider.

Timmins Station Timeline



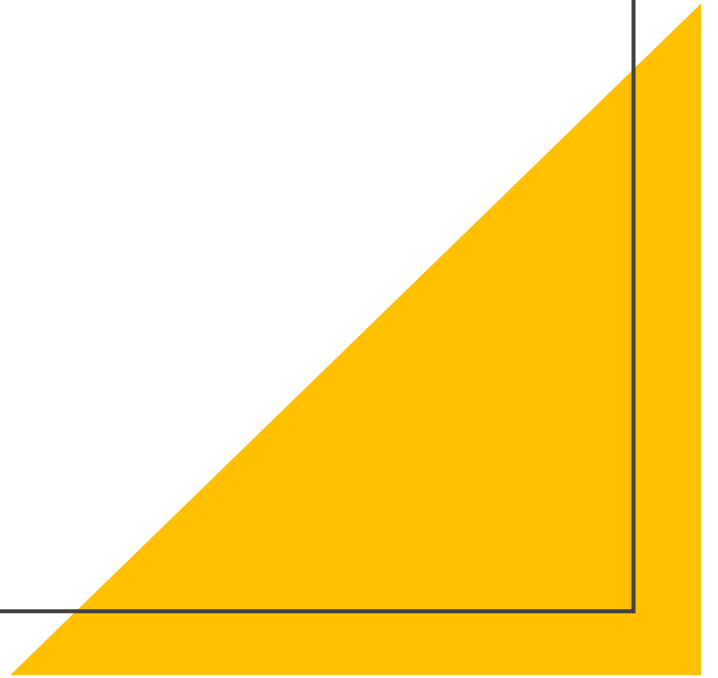
Public Meetings

Two rounds of Public Information Centres (PICs) are currently anticipated as part of the EA process as follows:

- One public meeting to introduce the project and seek initial feedback on early design concepts:
 - Planned for March 14, 2024.
- One public meeting to present information about refined design concept, potential environmental impacts and mitigation plans:
 - Anticipated Summer 2024.



Questions & Discussion





Thank you for joining us today



City of Timmins Meeting #1
January 24, 2024

Meeting Minutes

Meeting Minutes – City of Timmins Meeting #1

Project:	ONTC Northlander Passenger Rail Service	GF Project #:	073613
Meeting Date:	January 24, 2024	Time:	1:00pm - 1:40pm
Location:	Microsoft Teams	Facilitator:	Krystal Perepeluk

Invitees			
Name	Company	E-mail	In Attendance (Y/N)
Krystal Perepeluk	Ontario Northland (ON)	krystal.perepeluk@ontarionorthland.ca	Y
Jonathan Corley	ON	Jonathan.Corley@ontarionorthland.ca	Y
Kate Bondett	ON	Jonathan.Corley@ontarionorthland.ca	Y
Justin Haight	ON	justin.haight@ontarionorthland.ca	Y
Erin Hillis	ON	erin.hillis@ontarionorthland.ca	Y
Rebecca McGlynn	ON	rebecca.mcglynn@ontarionorthland.ca	N
Helena Ashberry	Gannett Fleming (GF)	hashberry@gfnet.com	Y
Amber Saltarelli	GF	asaltarelli@gfnet.com	Y
Jessica Graham	GF	jegraham@gfnet.com	Y
Radek Travnicek	GF	rtravnicek@gfnet.com	Y
Catherine Voytenkov	GF	cvoytenkov@gfnet.com	Y
Alexia Miljus	GF	amiljus@gfnet.com	Y
Cindy Welsh	City of Timmins (CoT)	cindy.welsh@timmins.ca	Y
Dave Landers	CoT	dave.landiers@timmins.ca	Y
Greg Paquette	CoT	gregory.paquette@timmins.ca	Y
Dave St. Onge	CoT	David.St.Onge@timmins.ca	Y
Ken Krcel	CoT	ken.krcel@timmins.ca	Y
Steph Palmateer	CoT	steph.palmateer@timmins.ca	Y
Nicola Alexander	CoT	nicola.alexander@timmins.ca	Y
Scott Colins	CoT	scott.colins@timmins.ca	Y
Scott Tam	CoT	scott.tam@timmins.ca	Y

Item	Action Owner
<p>Introduction</p> <ul style="list-style-type: none"> Recap of reinstating the passenger rail service between Toronto (Union Station) and Northeastern Ontario. Overview of new station proposed to be situated along the existing rail corridor between Matheson Station and Cochrane Station, within the City of Timmins. 	
<p>Environmental Assessment Process</p> <ul style="list-style-type: none"> The Timmins-porcupine Station is subject to an environment assessment (EA) study. Completed a number of existing baseline conditions reports, through field investigations and background document review. Planning for public meeting to introduce the project and present the initial Timmins Station concept design layout in March 2024. 	

Item	Action Owner
<ul style="list-style-type: none"> Environmental /technical studies will be summarized, and any mitigation measures will be captured within the Environmental Project Report (EPR). Draft EPR will be made available for public review and comment. 	
Proposed Timmins-Porcupine Station Elements <ul style="list-style-type: none"> Includes: train station platform, station building, station parking facilities, station pedestrian walkway, track works, Ontario Northland Bus Bays, municipal bus stop, and protection for bus storage and maintenance facility. 	
Conceptual Site Layout <ul style="list-style-type: none"> Station access is from King Street. Design assumption that buses will operate one-way on Falcon St. Review of potential impacts on surrounding infrastructure including King Street/Gervais intersection and sidewalks. 	
Property Consideration <ul style="list-style-type: none"> Seeking ways to minimize property impacts, as design progresses. 	
Traffic Circulation <ul style="list-style-type: none"> Design is based on assumption that buses will operate one-way on Falcon Street. 	
Municipal Utility Servicing <ul style="list-style-type: none"> SWM for 5-year will be captured on site. Spilt drainage west and east of station building. Currently have Ontario watershed drainage of site. Seeking connection for sanitary sewer. Existing known closest connection are observed on King Street, west of the King Street and Gervais Street N. intersection, and at the intersection of Gervais Street N. and Queen Street. 	
Permits, Licenses, Approvals <ul style="list-style-type: none"> Anticipate the following permits will be required: <ul style="list-style-type: none"> MTO Building & Land Use Permit MTO Sign Permit MTO Encroachment Permit(s) Municipal Site Plan Approval Municipal Building Permit Street Occupancy Permit(s) More in-depth conversations with the City regarding permits to occur as project design progresses. The project timeline will require engaging the City on Site Plan Approval at the 60% design stage. <ul style="list-style-type: none"> City of Timmins noted that a pre-consultation application form (as part of Site Plan Approval Process) is required. 	
Timmins Station Timeline <ul style="list-style-type: none"> 10% Design: January 2024 30% Design: April 2024 60% Design: July 2024 90% Design: October 2024 Construction Contract Awarded: February 2025 Construction Completion: May 2026 	
Public Meetings <ul style="list-style-type: none"> Two rounds of Public Information Centres (PICs) are planned for this project. PIC #1 is planned for March 14, 2024. Drop-in style format between 11am-2pm and 4pm-7pm. Can share materials with City prior to the public meeting. 	

Item	Action Owner
<ul style="list-style-type: none"> PIC #1 will introduce the EA process, steps in process and where public will have opportunity to provide feedback, high-level concept site plan, existing baseline conditions, and next steps. PIC #2 is planned for Summer 2024. PIC #2 will include information about impact assessment results established from EA work and proposed mitigation plans/commitments, construction timelines and how previous feedback was considered. 	
<p>Questions & Discussion</p> <ul style="list-style-type: none"> This is our first meeting/discussion about the project. Anticipate ongoing meetings with the City to obtain feedback as the design progresses. Requesting data be provided within two weeks, following issuance of the Meeting Notes with detailed data request (see attached). City of Timmins confirmed that a data sharing agreement is required for GIS information. <ul style="list-style-type: none"> ON confirmed that a Data Sharing agreement has been signed. City of Timmins requests a detailed list of the information required and date requested by (if available). ON confirm that a detailed list will be provided. <i>Please see City of Timmins Data Request table attached.</i> City of Timmins asked whether the whole length of Falcon Street is needed to be one-way. <ul style="list-style-type: none"> Bus circulation will require one-way, however, cars may still proceed with two-way traffic. There are concerns regarding width of street. Discussion regarding turning radius for various vehicles/equipment in and out of station parking and bus stop. City of Timmins have fire and building departments have turning radius information. City of Timmins asked how snow storage and removal will be addressed on site. <ul style="list-style-type: none"> To be further reviewed as design progresses and discussed during a future meeting with the City of Timmins. City of Timmins asked where the PIC will be hosted. <ul style="list-style-type: none"> GF confirmed that the PIC will be hosted at the Royal Canadian Legion Branch 287 at 46 Legion Drive, South Porcupine, ON, P0N 1H0. 	<p>CoT</p>

Attachment: City of Timmins Data Request table.

Correspondence

From: [Dave Landers](#)
To: [Krystal Perepeluk](#); [Cindy Welsh](#); [Gregory Paquette](#); [David St.Onge](#); [Ken Krcel](#); [Scott Tam](#); [Steph Palmateer](#)
Cc: [Scott Collin](#); [Nicola Alexander](#)
Subject: [External] RE: Northlander: Timmins Station Overview and TPAP
Date: Thursday, February 29, 2024 8:54:58 AM
Attachments: [image001.png](#)
[image003.jpg](#)

CAUTION - EXTERNAL EMAIL - Do not click links or open attachments unless you recognize the sender.

Looks good to me. The only question is why it keeps getting referred to as the Timmins-Porcupine Station and not the Timmins Station. It doesn't make sense for to resurrect a parochial name 50 years after amalgamation.

From: Krystal Perepeluk <Krystal.Perepeluk@ontarionorthland.ca>

Sent: February 28, 2024 3:12 PM

To: Cindy Welsh <Cindy.Welsh@timmins.ca>; Dave Landers <Dave.Landers@timmins.ca>; Gregory Paquette <Gregory.Paquette@timmins.ca>; David St.Onge <David.St.Onge@timmins.ca>; Ken Krcel <Ken.Krcel@timmins.ca>; Scott Tam <Scott.Tam@timmins.ca>; Steph Palmateer <Steph.Palmateer@timmins.ca>

Cc: Scott Collin <Scott.Collin@timmins.ca>; Nicola Alexander <Nicola.Alexander@timmins.ca>

Subject: RE: Northlander: Timmins Station Overview and TPAP

EXTERNAL E-MAIL WARNING - Avoid clicking links or opening attachments and content from external senders unless you are certain it is safe to do so. Exercise caution - If you are unsure, please contact ITD.

Hi,

As discussed at our meeting please see the boards we intend to use at the PIC on March 14th. They will be mixed between being on screen and some print outs. If you spot any mistakes or issues please let us know ASAP.

Cheers,

-Krystal

From: Krystal Perepeluk

Sent: Tuesday, February 20, 2024 3:27 PM

To: 'Cindy Welsh' <Cindy.Welsh@timmins.ca>; Dave Landers <Dave.Landers@timmins.ca>; Gregory Paquette <Gregory.Paquette@timmins.ca>; David St.Onge <David.St.Onge@timmins.ca>; Ken Krcel <Ken.Krcel@timmins.ca>; Scott Tam <Scott.Tam@timmins.ca>; Steph Palmateer <Steph.Palmateer@timmins.ca>

Cc: Scott Collin <Scott.Collin@timmins.ca>; Nicola Alexander <Nicola.Alexander@timmins.ca>

Subject: RE: Northlander: Timmins Station Overview and TPAP

Hi Cindy,

Much appreciated! No issues with the file download.

Cheers!

-Krystal

From: Cindy Welsh <Cindy.Welsh@timmins.ca>

Sent: Tuesday, February 20, 2024 3:19 PM

To: Krystal Perepeluk <Krystal.Perepeluk@ontarionorthland.ca>; Dave Landers <Dave.Landers@timmins.ca>; Gregory Paquette <Gregory.Paquette@timmins.ca>; David St.Onge <David.St.Onge@timmins.ca>; Ken Krcel <Ken.Krcel@timmins.ca>; Scott Tam <Scott.Tam@timmins.ca>; Steph Palmateer <Steph.Palmateer@timmins.ca>

Cc: Scott Collin <Scott.Collin@timmins.ca>; Nicola Alexander <Nicola.Alexander@timmins.ca>

Subject: [External] RE: Northlander: Timmins Station Overview and TPAP

CAUTION - EXTERNAL EMAIL - Do not click links or open attachments unless you recognize the sender.

Good afternoon Krystal,

Please see below the link to City of Timmins data that was requested on February 6, 2024, from ONTC. The spreadsheet is included in the download, with notes included relating to the data.

Note this link is active until **February 23, 2024**.

<https://sendfile.timmins.ca/download.php?id=5700&token=CYQ932cS1aVkgAy4TrK4Lv7LDYTco0IH>

If you require any further information, please feel free to reach out.

Thank you.

Cindy Welsh, RPP, MCIP

Manager of Planning

City of Timmins

Tel: (705) 360-2600 Ext. 3377

Fax: (705) 360-2678

www.timmins.ca



From: Krystal Perepeluk <Krystal.Perepeluk@ontarionorthland.ca>

Sent: Tuesday, February 6, 2024 8:53 PM

To: Dave Landers <Dave.Landers@timmins.ca>; Gregory Paquette <Gregory.Paquette@timmins.ca>;

David St.Onge <David.St.Onge@timmins.ca>; Ken Krcel <Ken.Krcel@timmins.ca>; Scott Tam

<Scott.Tam@timmins.ca>; Cindy Welsh <Cindy.Welsh@timmins.ca>; Steph Palmateer

<Steph.Palmateer@timmins.ca>

Cc: Scott Collin <Scott.Collin@timmins.ca>; Nicola Alexander <Nicola.Alexander@timmins.ca>

Subject: RE: Northlander: Timmins Station Overview and TPAP

EXTERNAL E-MAIL WARNING - Avoid clicking links or opening attachments and content from external senders unless you are certain it is safe to do so. Exercise caution - If you are unsure, please contact ITD.

Hello,

Thank you for meeting with us, attached are notes and the deck used at our meeting on January 24th.

Also attached is a spreadsheet outlining requested data during the meeting, if possible, we request 2 weeks turn around time.

Please let me know if you have any edits to the notes by EOD Tuesday February 13, 2024.

Cheers,

-Krystal

-----Original Appointment-----

From: Krystal Perepeluk

Sent: Wednesday, December 13, 2023 12:51 PM

To: Krystal Perepeluk; 'Saltarelli, Amber'; Graham, Jessica; Ashberry, Helena; Miljus, Alexia L;

Travnicek, Radek; Voytenkov, Catherine; McNeill, Shannon; Dave Landers; Gregory Paquette;

David St.Onge; Ken Krcel; Scott Tam; Cindy Welsh; Steph Palmateer

Cc: Justin Haight; Jonathan Corley; Kate Bondett; Rebecca McGlynn; Scott Collin; Nicola

Alexander; Erin Hillis

Subject: Northlander: Timmins Station Overview and TPAP

When: Wednesday, January 24, 2024 1:00 PM-2:00 PM (UTC-05:00) Eastern Time (US & Canada).

Where: Microsoft Teams Meeting

Purpose: to provide an update on the Timmins Station layout and an introduction to the Transit

Project Assessment Process (TPAP) ahead of Public Information Centers (PICs)

Materials to follow closer to the date

Microsoft Teams meeting

Join on your computer, mobile app or room device

[Click here to join the meeting](#)

Meeting ID: 221 434 129 192

Passcode: QcUyyt

[Download Teams](#) | [Join on the web](#)

Or call in (audio only)

[+1 437-703-4673, 482788860#](#) Canada, Toronto

Phone Conference ID: 482 788 860#

[Find a local number](#) | [Reset PIN](#)



[Learn More](#) | [Meeting options](#)

Visit our website:
<http://www.timmings.ca/>

DISCLAIMER: This message may contain information that is privileged or confidential and is intended to be for the use of the individual (s) or entity named above. This material may contain confidential or personal information which may be subject to the provisions of the Municipal Freedom of Information & Protection of Privacy Act. If you are not the intended recipient of this e-mail, any use, review, retransmission, distribution, dissemination, copying, printing, or other use of, or taking of any action in reliance upon this e-mail, is strictly prohibited. If you have received this e-mail in error, please contact the sender and delete the original and any copy of this e-mail, and any printout thereof, immediately. Your cooperation is appreciated.

Visit our website:
<http://www.timmings.ca/>

DISCLAIMER: This message may contain information that is privileged or confidential and is intended to be for the use of the individual (s) or entity named above. This material may contain confidential or personal information which may be subject to the provisions of the Municipal Freedom of Information & Protection of Privacy Act. If you are not the intended recipient of this e-mail, any use, review, retransmission, distribution, dissemination, copying, printing, or other use of, or taking of any action in reliance upon this e-mail, is strictly prohibited. If you have received this e-mail in error, please contact the sender and delete the original and any copy of this e-mail, and any printout thereof, immediately. Your cooperation is appreciated.

Timmins-Porcupine Station Environmental Assessment

Public Information Centre



Land Acknowledgement



We would like to acknowledge the importance of the land which Ontario Northland operates on.

We do this to reaffirm our commitment and responsibility in improving relationships between Ontario Northland and Indigenous peoples and communities to improve our understanding of local Indigenous peoples and their cultures.

We are dedicated to honouring the treaties and other commitments that have been made by moving towards reconciliation and collaboration.



Overview of Public Information Centre



Present Timmins-Porcupine Station initial concept design



Provide overview of the environmental assessment process



Summarize technical and environmental studies



Present existing environmental conditions



Seek comments and feedback



Facing north on Timmins-Porcupine Station Site



Facing south on Timmins-Porcupine Station Site

Northlander Passenger Rail Service

Ontario Northland is reinstating passenger rail service between Toronto (Union Station) and Northeastern Ontario via the Northlander Passenger Rail Service. As per Option 2, in the Updated Initial Business Case, the reinstated Northlander will include passenger train service from Toronto to Timmins and will provide a rail connection from Timmins to Cochrane.



740km
of Rail Corridor



16
Station Stops

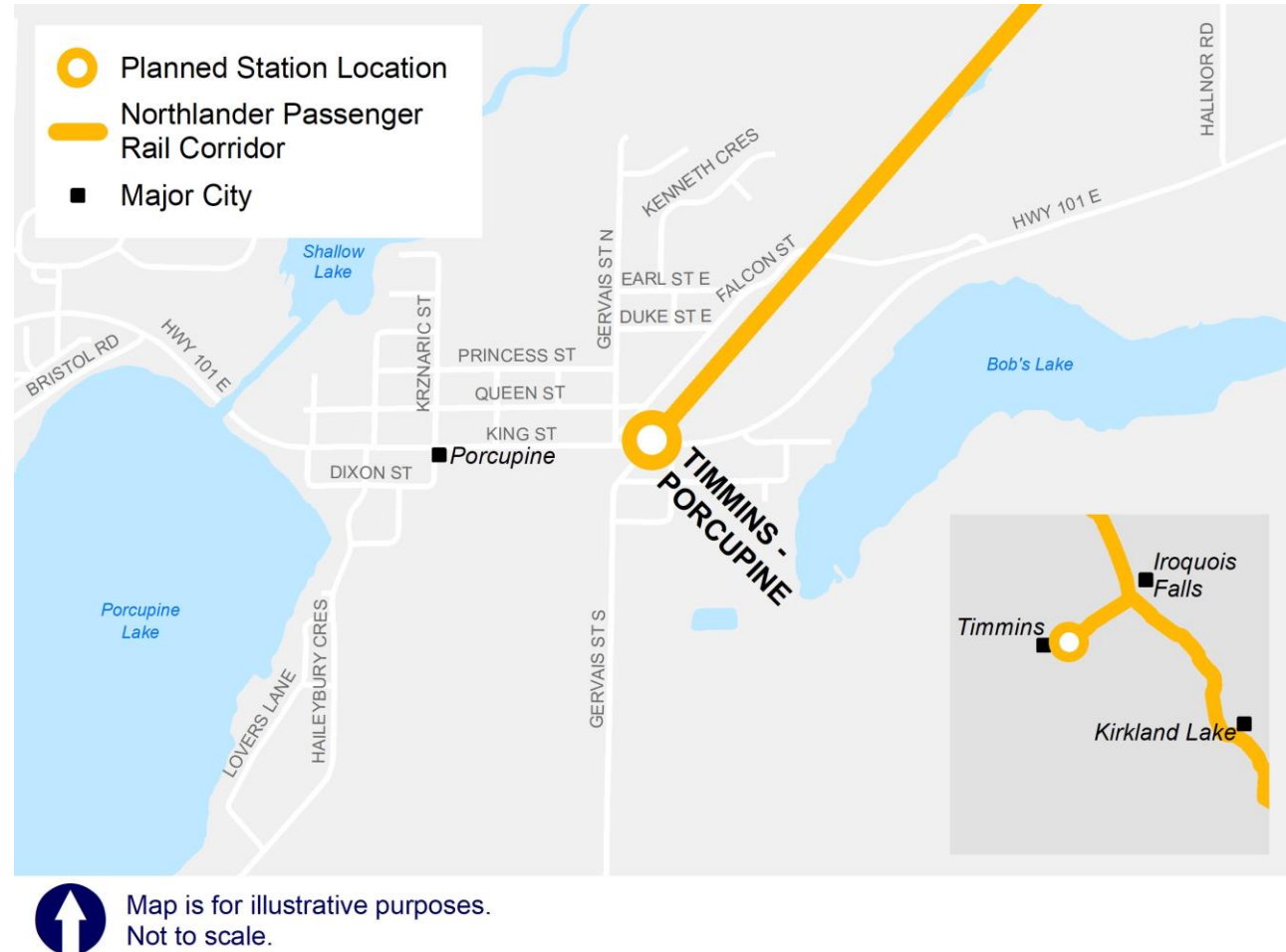


1
New Proposed Station



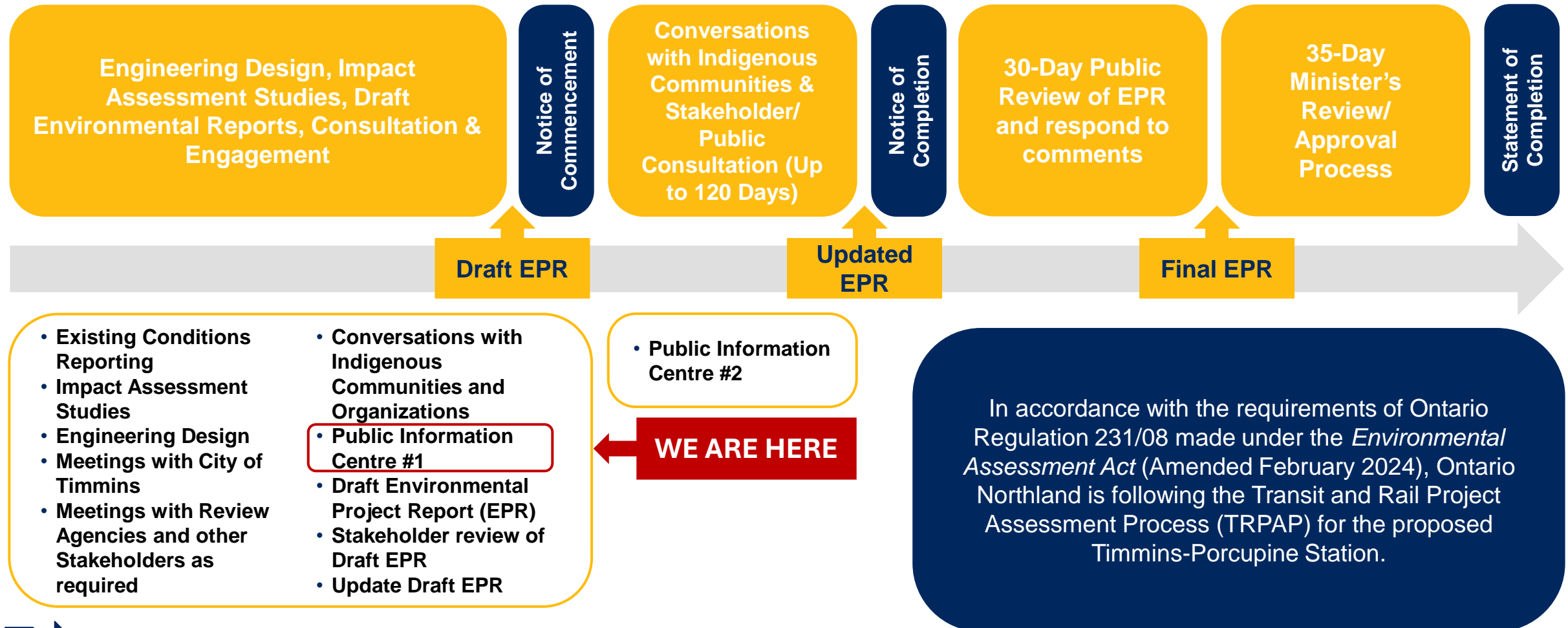
Overview: New Timmins-Porcupine Station

- The new Timmins-Porcupine Station elements will include: train platform, station building, outdoor parking, pedestrian walkway, bus bays, a taxi stand, designated passenger pick-up and drop-off area, and a municipal bus stop.
- The new Station is situated along the existing rail corridor between Matheson Station and Cochrane Station, within the City of Timmins.
- Designs will protect for land that may be required for future construction of a Bus Storage and Maintenance Facility.



Transit and Rail Project Assessment Process

Planning, Design and Environmental Assessment Process

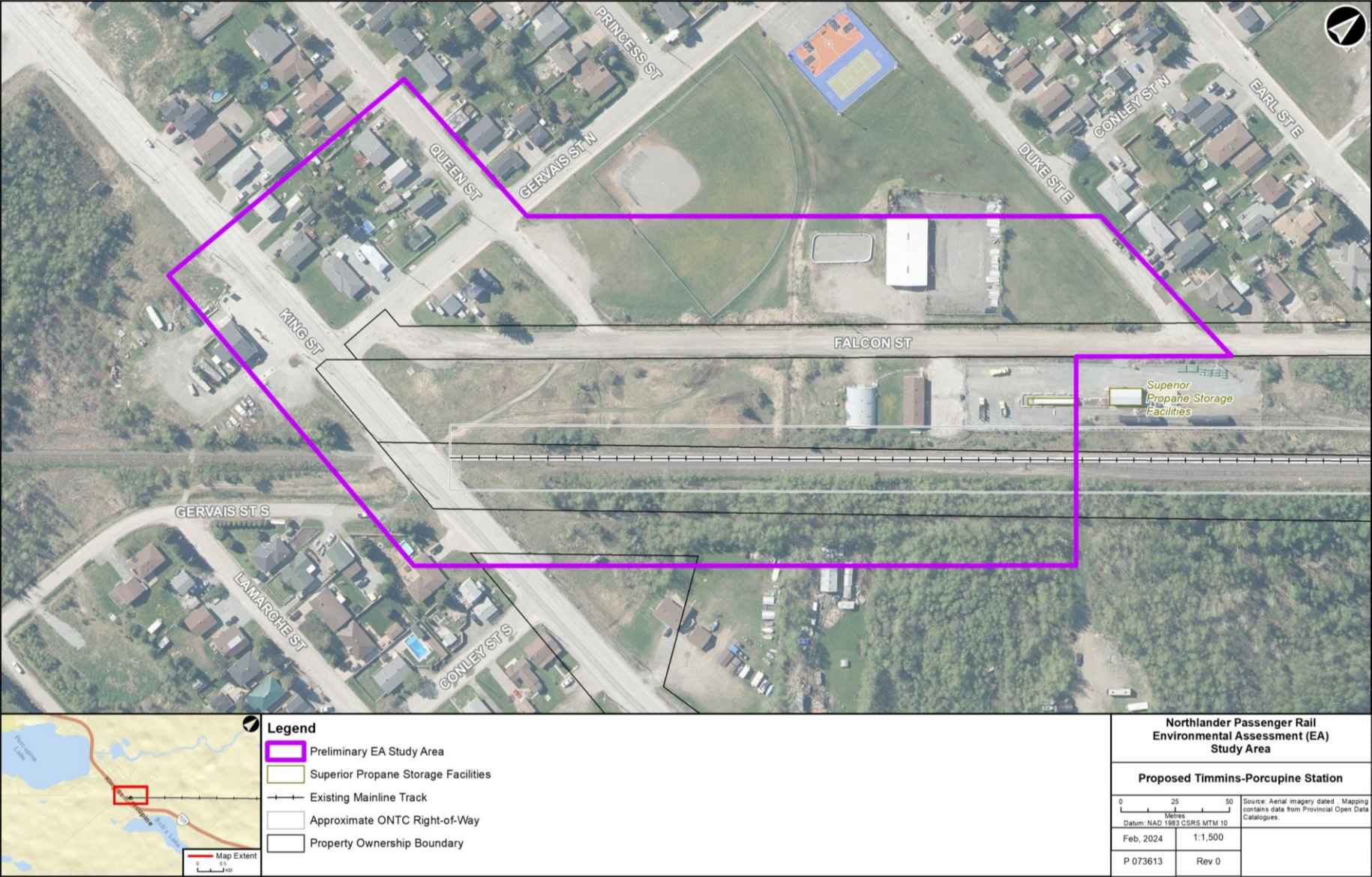


Proposed Timmins-Porcupine Station Elements

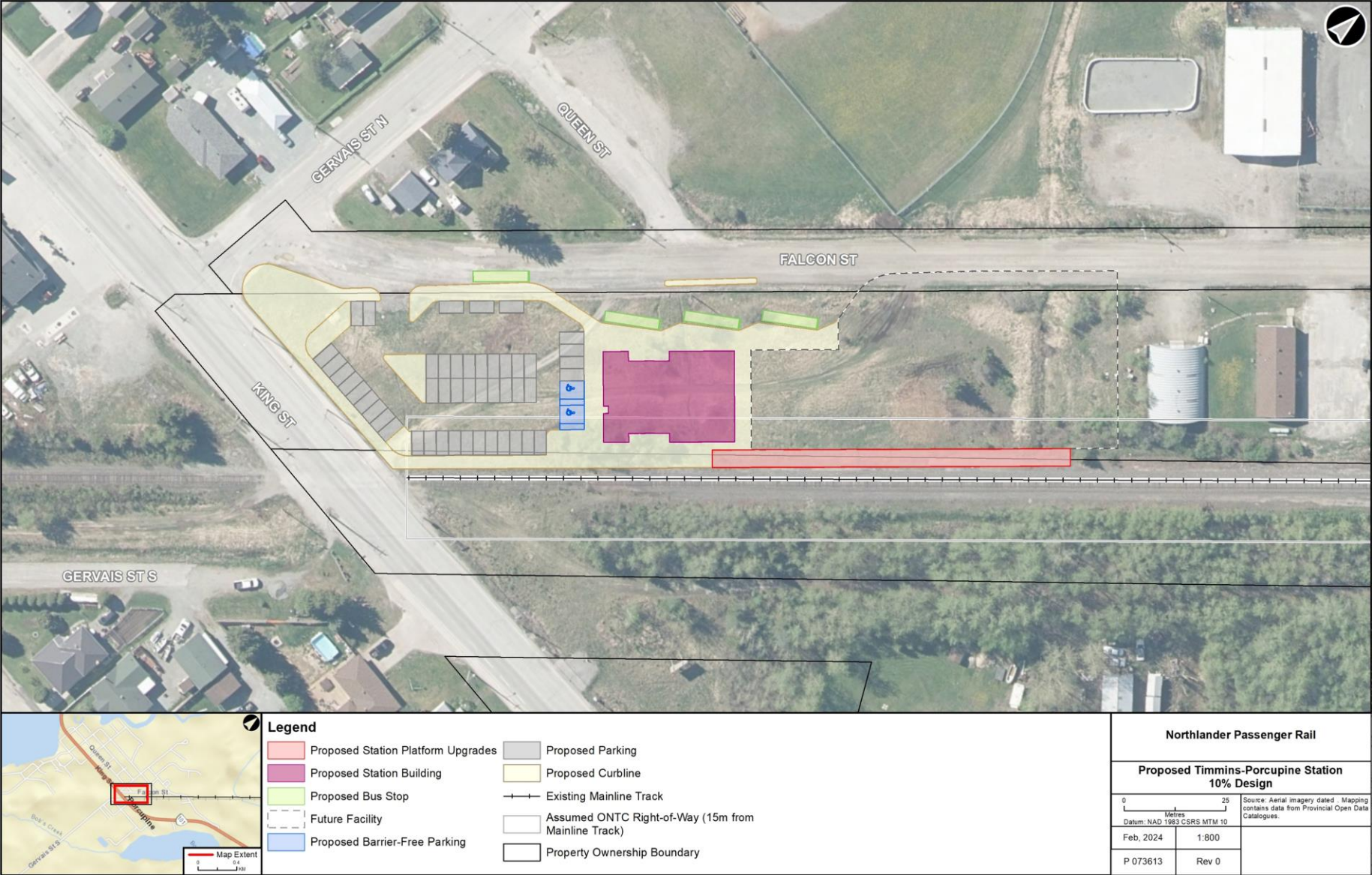
Project Component	Description
Train Station Platform	Train Station Platform features will include tactile warning strips, platform edge, and areas for Accessible Cars to stop at the platform.
Station Building	Station Building features will include wicket for travel tickets and information, wicket for parcel drop-off/pick-up, waiting area, washroom, breakroom for crews and station staff.
Outdoor Parking	Outdoor Parking include features designated to accommodate a taxi stand, passenger pick up/drop off, accessible, general and employee parking.
Station Pedestrian Walkway	Station Pedestrian Walkway will be built around the station building, providing convenient access to various station elements.
Trackworks	Minimal trackwork will be required as existing rail infrastructure is already in place.
Ontario Northland Bus Bays	Bus bays to be provided for a seamless connection to Ontario Northland motor coach services.
Municipal Bus Stop	Bus stop on the street to be provided for municipal bus service.
Bus Storage & Maintenance Facility	<i>*Protecting for land that may be required for potential future construction of a Bus Storage & Maintenance Facility.*</i>



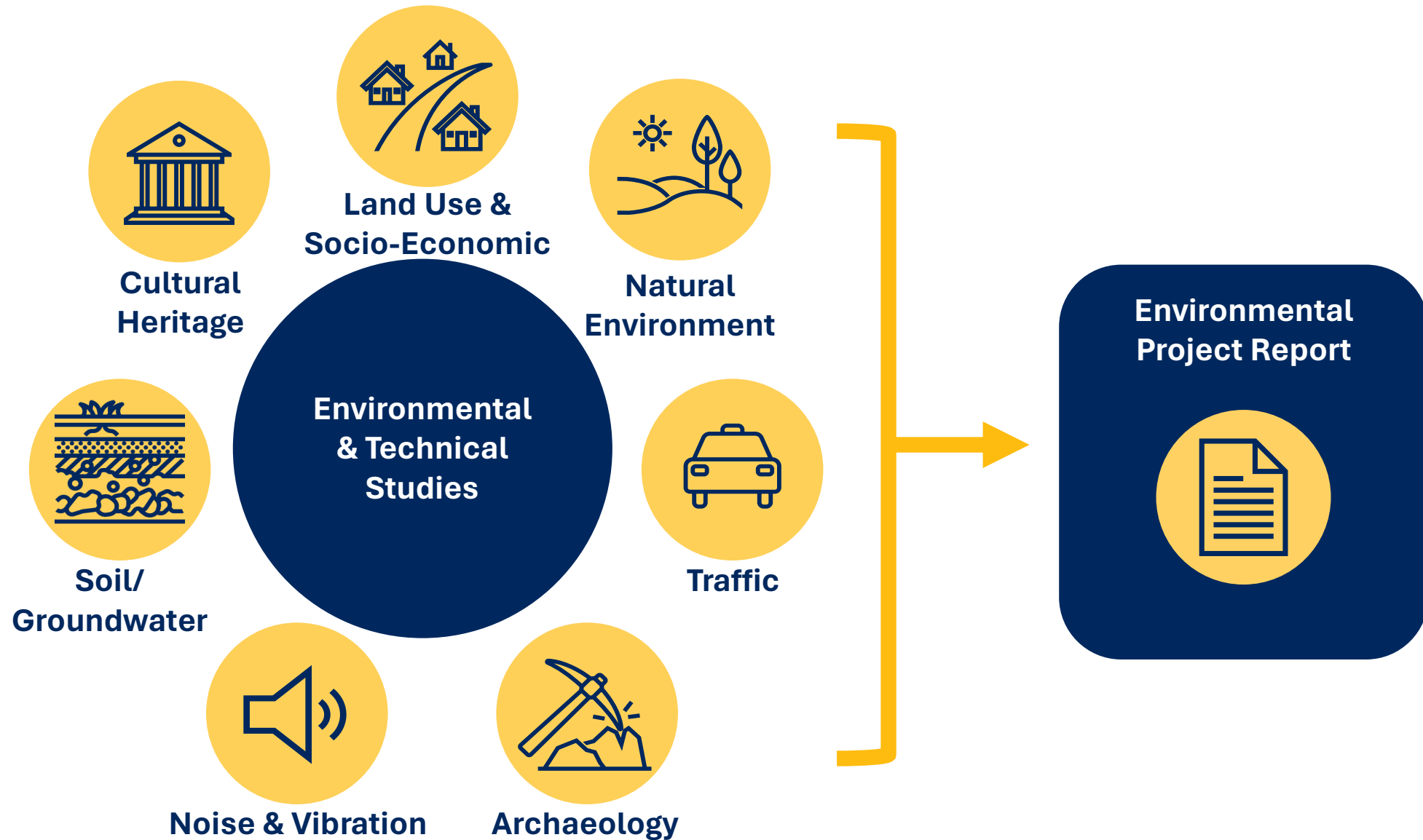
Timmins- Porcupine Station Study Area



Timmins-Porcupine Station – Conceptual Site Layout



Environmental Studies & Reporting



Land Use & Socio-Economic

The land use & socio-economic study is conducted to understand current and future land use conditions in a study area and assess potential effects the project may have on those features.

Desktop Study

A desktop review is conducted to identify significant socio-economic & land use features, including:



Commercial Areas



Institutional Uses



Employment
Lands



Recreational Uses



Parks & Open
Spaces



Where possible, design will avoid impacts to socio-economic and land use features.

Existing Conditions: Land Use & Socio-Economic

Land Use Features

- Crown Land Use Policy: Timmins Porcupine Urban Area
- Per the City of Timmins Official Plan, the Study Area is:
 - Designated as Neighbourhood Area and Employment Area
 - Located within the Mineral Development designation
 - Within 1 km of a Mine Hazard feature
- Nearby future developments include the Connecting Link Program Segment 14: Porcupine River Bridge and Porcupine River Bridge to Ontario Northland Rail Crossing

Socio-Economic Features

- Whitney Park
- Bus Route 16
- Porcupine United Church located at 122 Queen Street
- Whitney Volunteer Fire Hall located adjacent to 110 Dixon Street
- École Catholique St. Jude located at 225 Dixon Street
- Snowmobile trail that is available during the winter months



Natural Environment

A Natural Environment study will identify existing natural heritage features in the study area as well as potential impacts on the terrestrial and aquatic environment and habitats. Key components being reviewed as part of the study include:



Wildlife



Designated Natural Areas



Aquatic and Terrestrial Habitat



Species at Risk

Regulatory requirements such as the *Migratory Birds Convention Act*, *Endangered Species Act* and *Species at Risk Act* will be met. Best management practices, mitigation strategies, and species-specific mitigation measures will be implemented, as required, in consultation with applicable regulatory agencies such as the Ministry of the Environment, Conservation and Parks and Environment.



Existing Conditions: Natural Environment



No Areas of Natural and Scientific Interest (ANSI).



No provincially significant wetlands (PSWs) or other wetlands identified within the Study Area.



No watercourses present within the Study Area.

Vegetation communities includes:



Cultural Meadow



Marsh



Manicured Lawn

Existing Conditions: Natural Environment

Based on initial inventory work completed to date, the following species at risk (SAR) were identified as having the potential to occur within the Timmins-Porcupine Station Study Area:

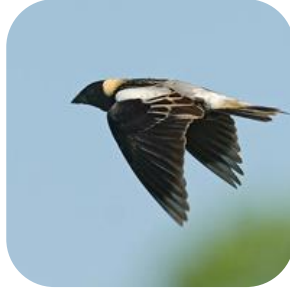
Birds



Barn Swallow
(*Hirundo rustica*)



Black Tern
(*Chlidonias niger*)



Bobolink
(*Dolichonyx oryzivorus*)



Canada Warbler
(*Cardellina canadensis*)

Mammals



Little Brown Myotis
(*Myotis lucifugus*)



Northern Myotis
(*Myotis septentrionalis*)

Invertebrate



Yellow-banded Bumble Bee
(*Bombus terricola*)

Further work will be carried out as part of the impact assessment phase to evaluate potential impacts (if applicable) to SAR and to develop mitigation plans as/if necessary.



Traffic

If changes to current traffic setups are needed for construction, we may assess traffic flow and consider alternative routes to ensure safe construction while minimizing disruption.

Our commitment to safety and minimal public inconvenience guides our construction approach. We will securely separate work areas from public spaces, redirecting pedestrians, cyclists, and vehicles smoothly around construction zones with clear signage. While we strive to keep disruptions to a minimum, you might notice some temporary changes:



Short-term road or lane closures with possible adjustments to driveway access



A slight increase in travel times



Temporary adjustments to local bus routes



Some congestion from construction vehicles



Brief detours for cyclists and pedestrians



Traffic control at King Street and Gervais Street North Intersection, as required



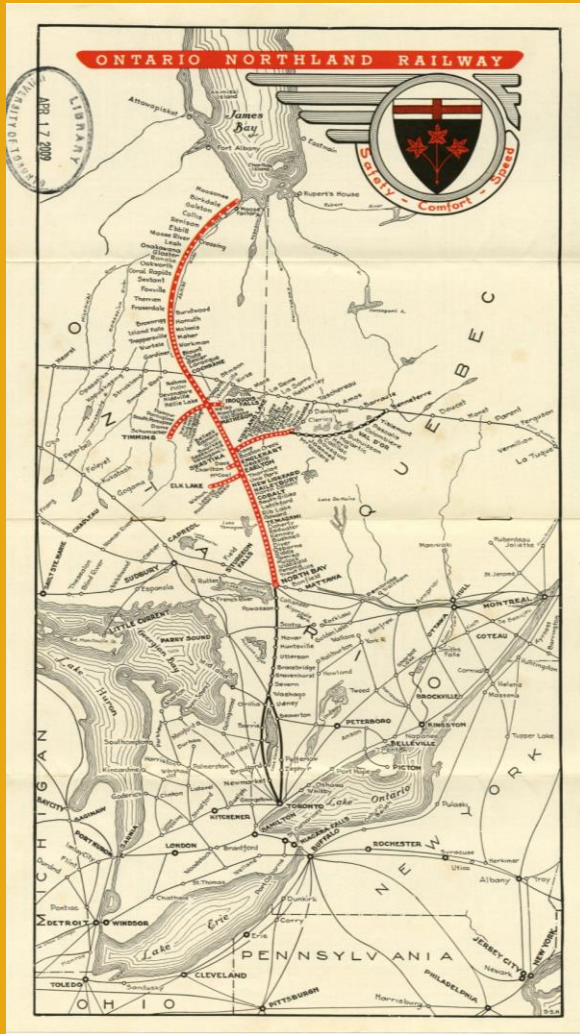
Archaeology

Governed by provincial standards and guidelines issued by the Ministry of Citizenship and Multiculturalism, archaeological study is carried out by licensed professional archaeologists. A Stage 1 Archaeological Assessment was undertaken for the project to assess archaeological potential of the study area.

- As part of the Stage 1 AA, an Archaeologist determines and evaluates areas of archaeological potential.
- The Stage 1 AA study concluded that there is no potential for the disturbance of unassessed or documented archaeological resources based on the conceptual site layout for the new station.
- No further archaeological assessment is recommended; no specific mitigation measures are required.



Cultural Heritage



Ontario Northland Railway
Map, 1956

The Cultural Heritage Report: Existing Conditions & Preliminary Impact Assessment looks at properties (structure and/or landscapes) with known or potential cultural heritage value or interest. It assesses the potential effects from the proposed project and recommends mitigation measures to minimize any adverse effects.

No known or potential built heritage resources (BHRs) and/or cultural heritage landscapes (CHLs) were identified in the Study Area.

As there are no anticipated impacts to cultural heritage resources (CHRs), mitigation measures are not required.



Construction Noise & Vibration

During construction, the use of heavy machinery may cause noise & vibration above existing baseline levels. The noise & vibration study components may include:

Ontario



Review of Ministry of Environment, Conservation and Parks (MECP) noise level standards



Assessment of monitoring requirements for noise & vibration levels during construction



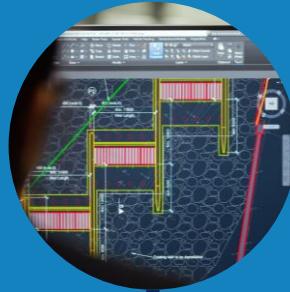
Conducting surveys at properties that may be affected by vibration-causing activities (if required)

Next Steps

Summarize Feedback
Received



Progress Timmins-
Porcupine Station
Concept Design



Develop Draft
Environmental Project
Report



Respond to
Comments/Feedback



Conduct
Environmental Impact
Assessment



Public Information
Centre #2



Community Engagement



Ontario Northland is committed to engaging with the local community throughout the project by:

- Providing opportunities to share information about project updates.
- Understanding how the station design will fit within the community.
- Listening to the community's perspective, collecting input and considering options to mitigate impacts where required.



We want to hear from you!

- Please fill out a comment form.
- Send us your questions and comments afterward to pr@ontarionorthland.ca.



Join our mailing list.

- Visit us online at:
ontarionorthland.ca/en/northlander-passenger-rail-updates



Thank you
Merci



Northlander



Ontario Northland