

August 22, 2025

Addendum No. 01

File Reference Number: RFP 2025 069

Title: ONTC Bridge Maintenance – Temagami and Ramore Subdivision

RE: Clarifications/Questions

Please refer to the following information/clarification:

MANDATORY VIRTUAL SITE MEETING:

A Mandatory virtual site meeting was conducted on Tuesday, August 19, 2025, at 10:00 a.m.

Please find the virtual site meeting presentation attached at the end of this Addendum.

Item 1: Presentation indicated that the project is going to be a multi-year. However, the Scope of Work mentions the Project completion date as July 31, 2026. This leaves only one year, with most of it in cold conditions. Can you confirm if the completion date is correct?

Answer: To align with company's objectives, ONTC can confirm the completion date is July 31, 2026.

This Addendum hereby forms part of the RFP.

Regards,

Brinda Ranpura
Procurement Contracts Specialist
brinda.ranpura@ontarionorthland.ca



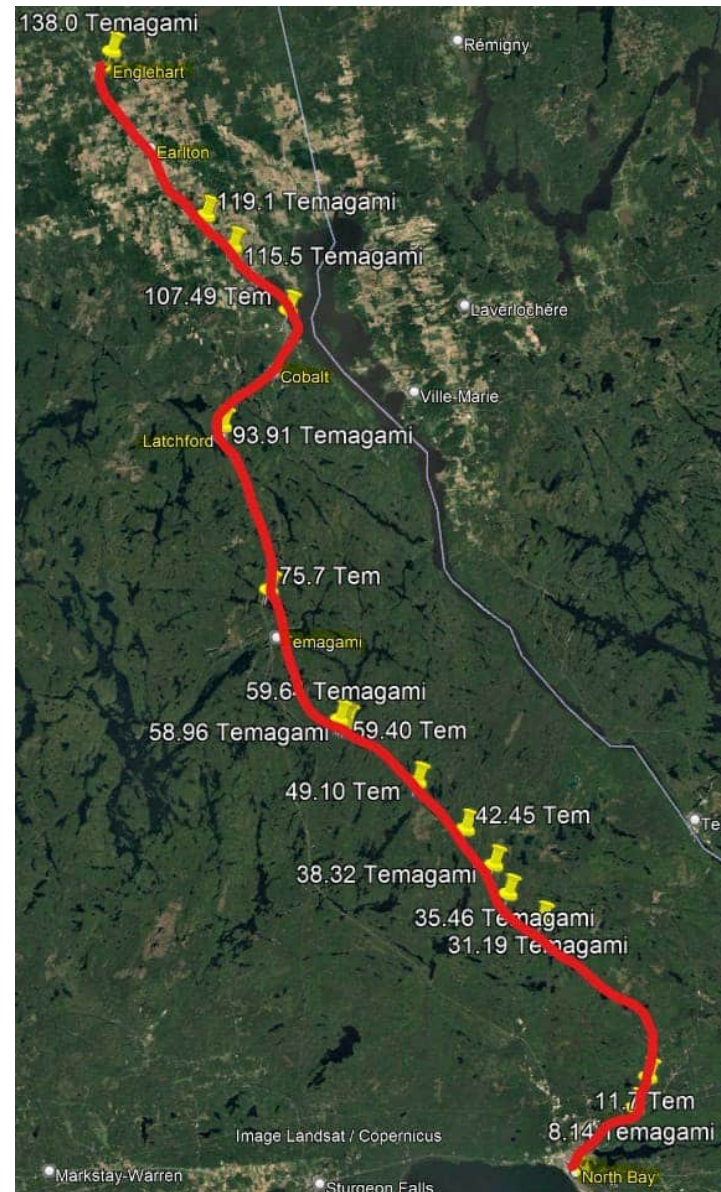
ONTC Temagami/Ramore Subdivisions Bridge Maintenance RFP 2025 069

Virtual Site Meeting
Tuesday, August 19, 2025, 10:00 am

Temagami Subdivision

From North Bay to
Temagami to
Temiskaming Shores to
Englehart

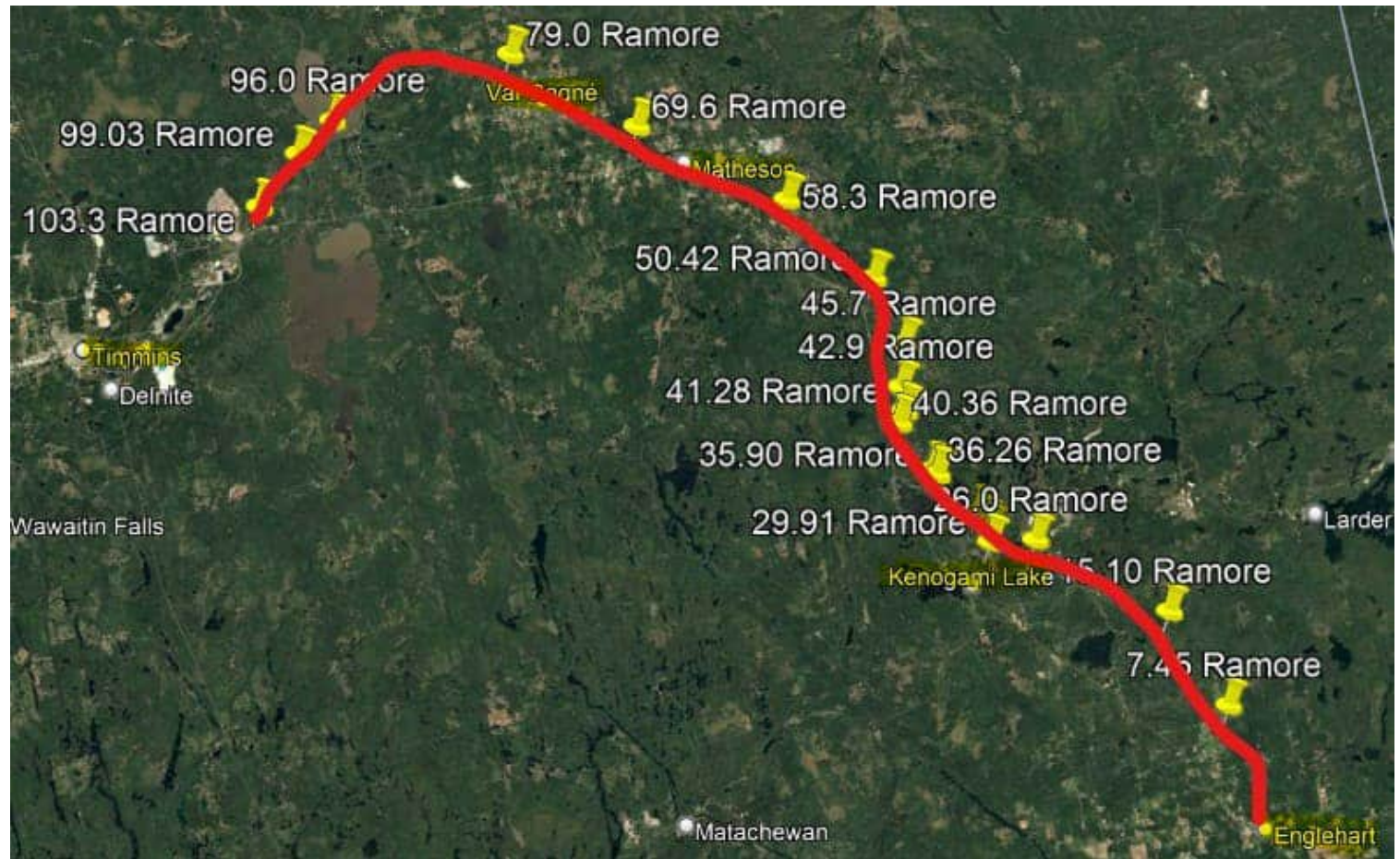
Access to level crossings shown
in Tender documents



Ramore Subdivision

From Englehart to
Swastika to
Sesekinika to
Matheson to
Porquis Junction to
Porcupine

Access to level
crossings shown in
Tender documents



Lists of Bridge Sites

Temagami Subdivision

Mile	8.14	1 Span 40' DPG
	11.70	1 Span 29' DPG
	31.19	1 Span 30' DPG
	35.46	1 Span 26' TPG
	38.32	1 Span 18' RCS
	49.10	2 Spans 30' TPG
	58.96	2 Spans 21' RCS
	59.40	1 Span 35' DPG
	59.64	2 Spans 21' RCS
	75.70	1 Span 100' TPG
	93.91	3 Spans 133' TT
	107.49	1 Span Conc Frame
	115.50	5 Spans of DPG
	119.10	9 Spans DPG/DT
	138.00	13 Spans DPG/DT

Total 15 Structures

Ramore Subdivision

Miles	7.45	12 Spans DPG/DT
	15.10	5 Spans of DPG
	25.80	1 Span 30' DPG
	26.00	1 Span 81' TPG
	29.91	5 Spans 18' RCS
	30.67	1 Span 15' RCS
	31.16	1 Span 18' RCS
	32.00	1 Span 18' RCS
	35.90	1 Span 17' RCS
	36.26	3 Spans 15' RCS
	40.36	5 Spans 15' RCS
	41.28	1 Span 18' RCS
	42.90	1 Span 55' DPG
	45.70	1 Span 35' Arch
	50.42	1 Span 18' RCS

Ramore Subdivision

Miles	58.30	10 Spans of DPG
	69.60	8 Spans of DPG
	79.00	8 Spans DPG/DT
	96.00	6 Spans of DPG
	99.03	1 Span 18' RCS
	103.30	7 Spans RCS/DPG

Total 21 Structures

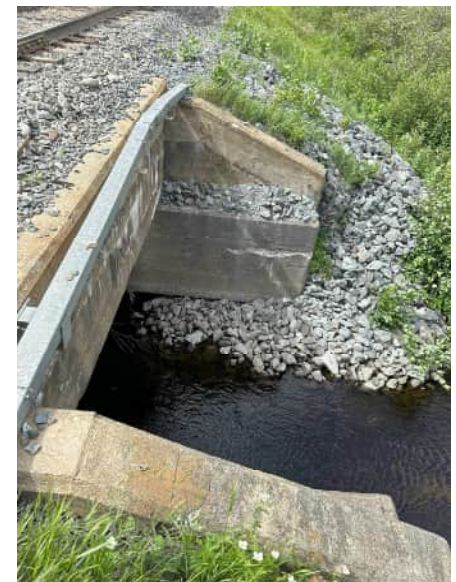
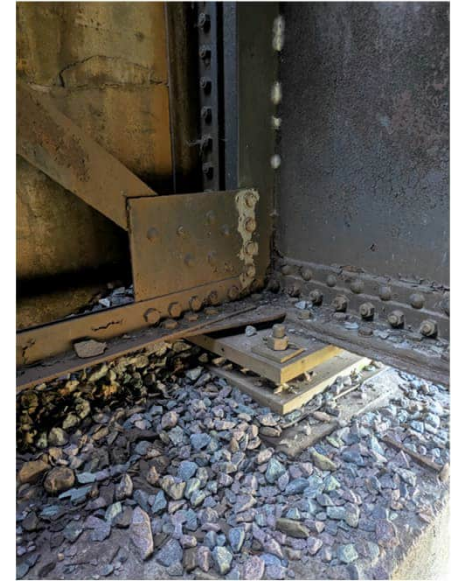
Work Activity

Add Ballast on
Approaches –
level/raise track
and tamp ballast



Work Activity

Clean debris off
of bearing seats,
top of steel and
walkways



Work Activity

Remove Bird
Nests

Clean out
pockets on end
floor beams



Work Activity

Bury Fiber-
Optic cables or
fix F/O conduit
box



Work Activity

Supply and
Install Ties of
various sizes

- Track Ties *
- Approach Ties
- Backwall Ties



Work Activity

Clear vegetation
from around the
bridge

-Beneath bridge
around
substructure

-In Approaches

-Anything
growing into the
towers and
superstructure



Work Activity

Removal of
excess ballast
in steel troughs



Work Activity

Removal of
excess ballast in
concrete troughs



Work Activity

Replace small
approach
retaining walls
with Precast L
Walls



Work Activity

1 - Add Riprap at wingwall ends and footings



Work Activity

2 - Add Riprap at wingwall ends and footings



Work Activity

Cover Holes
25.8 & 26.0
Ramore



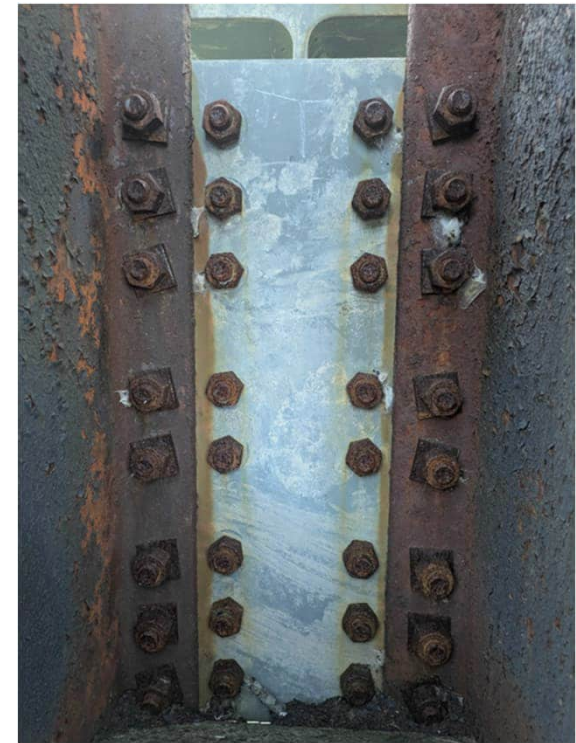
Work Activity

Remove
defective Refuge
Bays
69.6 Ramore



Work Activity

Clean and paint
bolts on tower
jacking beam



Work Activity

Drill drainage
holes in waler
beams
79.0 Ramore



Work Activity

Repair bolts on
base of handrail
post
107.49
Temagami



Work Activity

Supply and
Install Refuge
Bays
115.50
Temagami



Work Activity

Raise backwall
7.45 Ramore



Work Activity

Hook bolt
program



Optional Work Activity

Adjusting
bearing height
for curves
11.70 & 31.19
Temagami



Optional Work Activity

Shimming track
at ends of
bridges for
curve
modifications



Optional
Larger Work
Activity

North Abutment
Approach
remediation
119.10
Temagami



Optional Larger Work Activity

South Abutment
Approach
remediation
11.70 Temagami



Optional Larger Work Activity

Undercutting of
track at
approach
7.45 & 58.3
Ramore



Items to note:

- Sites are from North Bay to Temiskaming Shores to Englehart to Pourquis Junction to Timmins, ON.
- There are level Crossings throughout the territory near most bridges with some exceptions of longer hi-rail distances
- Some sites are right on Hwy 11 and very visible, ONR sites have been visited by the Ministry of Labour
- The only in-water work would be the Rip-rapping at 93.91 Temagami and some of the smaller spans on the Ramore. A No in-water work window at 93.91 Temagami for a previously rehab was from April 1 to June 30.
- If any scaffolding needs to be hung from the bridges, the plan will need to be submitted for ONR review
- ONR policy is that for quick inspection employees may cross the bridge walking between the rails without fall protection, however contractors working on the bridge will need fall protection to be on the deck
- There are ONR Yards and sidings spread out through the subdivisions.
- If required, some space can likely be found within the yard or siding for rail mounted equipment. This will need to be arranged with the ONR Transportation Department.

Other Items

- 99' wide Right of Way – Material may be stored within ROW but clear of Track.
- Fibre-optic cables on bridge and buried beside track – Contact Onterra regarding the handling and protection of the cables. On1Call to be contacted for other Utilities.
- Current train schedule in Tender Docs – ONR Flagman will be provided for typical 10 hour work day. Typical 5 and 2, 4 and 3 or 8 and 6 for continuous protection. All access to the bridge and tracks needs to be through an ONR Flagman.
- A schedule is required with submission. If contractor exceeds schedule length without agreed upon extensions, liquidated damages shall be assessed based on the Contract Documents.
- This could be a multi-year project and budgeting can depend on the contractor's proposed monthly progress payment billing schedule.
- Optional items are shown as lumpsum prices. A more detailed breakdown will be requested before proceeding, if that optional work is selected. Options to items can be added in the Alternative information section of the tender.

- ONR does not supply hi-rail vehicles
- ONR does not allow rubber wheeled vehicles to travel on the track or ballasted shoulders
- Chipped concrete and removed steel is to be disposed of at a proper facility
- Include Spill Response Plan in submission.
- Submit all forms from Part 4 to not be disqualified
- Gain points by demonstrating specific relevant project experience
- Provide detailed achievable schedule and approach methodology
- Contact Brinda Ranpura of the ONR for any questions