



555 Oak Street East
North Bay, Ontario
P1B 8L3

555, rue Oak Est
North Bay (Ontario)
P1B 8L3

Tel: 1-800-363-7512
www.ontarionorthland.ca

August 18, 2025

Addendum No. 01

File Reference Number: RFP 2025 065

Title: Englehart Station Parking Lot

RE: Clarifications/Questions

MANDATORY VIRTUAL SITE MEETING:

A Mandatory virtual site meeting was held on Wednesday, August 13th, 2025, at 10:00 a.m.

Please find the virtual site meeting presentation provided with this Addendum at Appendix "A".

QUESTIONS/CLARIFICATIONS:

Item 1: We do not see the type of "Geotextile" specified in the drawings, geotechnical report or in the specifications. Can you please provide this information?

Answer: ONTC advises that The Geotextile specified is a Class II Non-Woven Geotextile.

Item 2: Insulation is listed in the geotechnical report for the parking lot subgrade, however, there is no line item with quantities in the tender form provided.

Answer: ONTC advises that the geotechnical report is provided for reference only and that there is no rigid insulation included in the design prepared by EXP Services Inc., therefore, no corresponding line item in the tender form is included.

Item 3: Can you please confirm the "Granular A" quantity provided in the tender form?

Answer: ONTC advises that the quantity of "Granular A" is 1,733 tons.

Item 4: The drawings show a detail for guiderail, however, the location is not specified on the drawings and there is also no item on the tender form provided. Please confirm location and quantities.

Answer: Please see the revision 1 Drawings for location, types and lengths of guiderail, located at Appendix "B" of this Addendum. ONTC requests that the corresponding price for this items is to be added to Line Item 29 - Add any other costs of Proposal Form 1-A - Schedule of Prices.

Item 5: There is an item in the tender form for excess soils management. Please confirm that this line item is to cover the cost to produce the excess soils management report only and that any costs associated with removing excess soils will be handled as an extra to the contract, if required.

Answer: ONTC advises that Line item 3 - Management of Excess Materials, of Proposal Form 1-A - Schedule of Prices includes items outlined in the ONTC Master Construction Specifications, Environmental Procedure. This includes, but it not limited to, preparation of a Soil and Excavated Materials Management Plan, Testing, Tracking and record keeping. Please refer to Section 1.10 of the Environmental Procedure in the ONTC Master Construction Specifications for detail regarding the disposal of soil containing environmental contaminants.

The RFP Documents have been revised and sections affected are noted below. The revised RFP sections supersede all previous RFP Document versions for the said documents.

Part 4 - Form of Proposal

Delete Document:	Replace with Revised Document:
Proposal Form 1-A - Schedule of Prices	Proposal Form 1-A - Schedule of Prices (Addendum No. 02)

This Addendum hereby forms part of the RFP.

Regards,

Nicole Laplante
Procurement Contracts Specialist
nicole.laplante@ontarionorthland.ca

Appendix “A”



Englehart Employee Parking Lot Virtual Site Meeting

August 13, 2025



Agenda:

1. Introduction.
2. Background information.
3. Schedule of Work.
4. Questions



Introduction.

ONTC:

A.Esmail Zougari– Manager, Capital Project

B.Abigale Green-Project Manager

C.Nicole Laplante-Procurement Contracts Specialist



Background Information

The Englehart Employee Parking Lot is located at 1 Railroad St, Englehart, ON P0J 1H0. The parking lot is used by ONTC employees that work at the Ontario Northland Station. The subject site is a gravel parking lot and consists of vehicle block heaters and lighting posts. The total parking lot area is estimated to be approximately 4,650 square metres (50,052 square feet).



Schedule of Work

Construction activities shall commence as soon as, and be completed no later than October 27th, 2025.



Site Location-Englehart Station

Englehart
Station

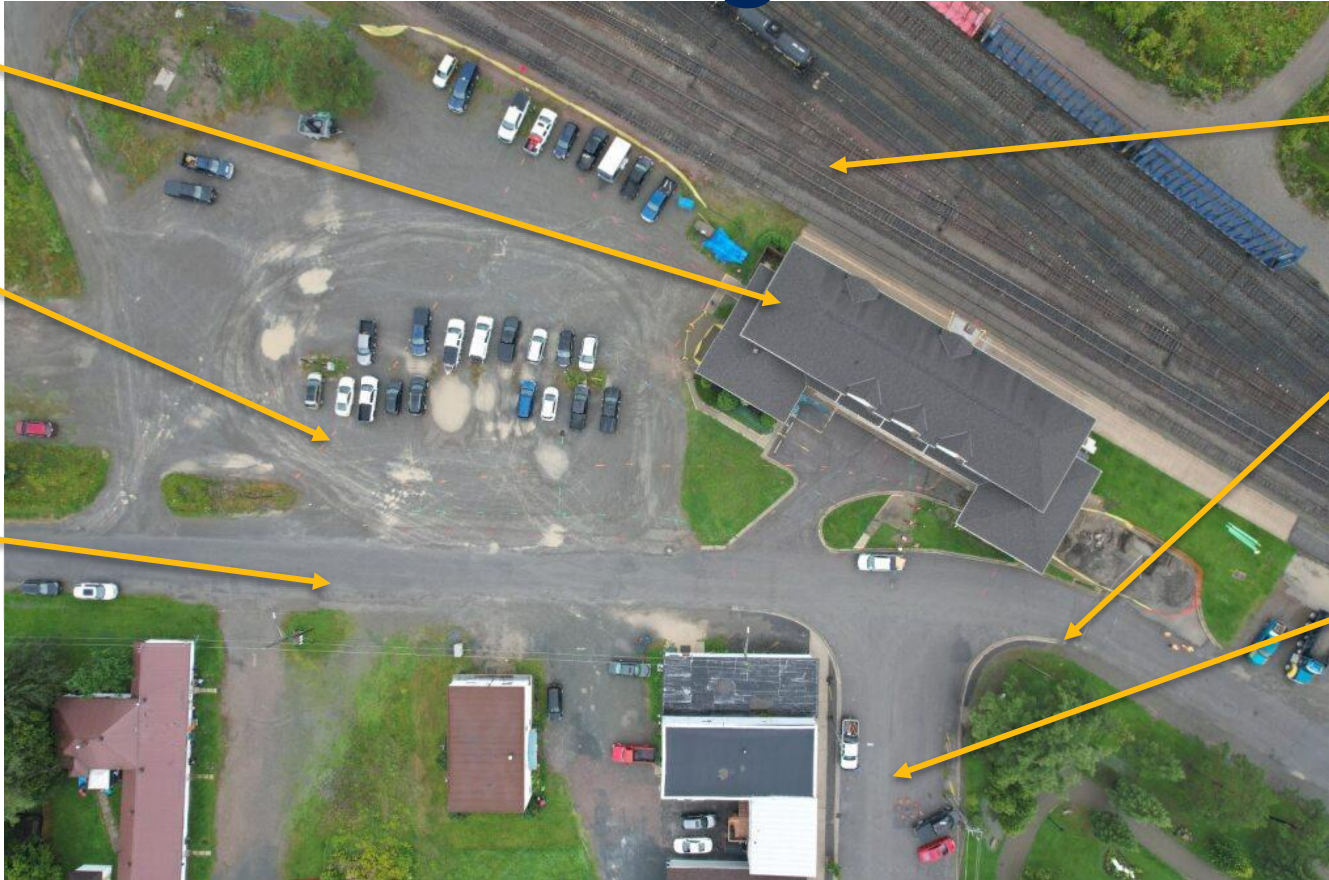
Employee
Parking
Lot

3rd Avenue

Train Tracks

Railroad Street

3rd Street



1 Railroad Street, Englehart, ON P0J 1H0



1 Railroad Street Access



Existing Parking Lot



Light Poles

SLIDE : 9





Hydro Meter





Employee Entrance

SLIDE : 11





Culverts

SLIDE : 12





Questions

Questions shall be submitted via email to Procurement Primary Contact Person and responses will be provided via addendum.

Site visit

Site visit can be arranged at request.

Important dates:

Last day for questions: Four (4) full Business Days prior to the Submission Deadline
RFP Close date: September 8th, 2025 at 2:00:00 pm (EDT)



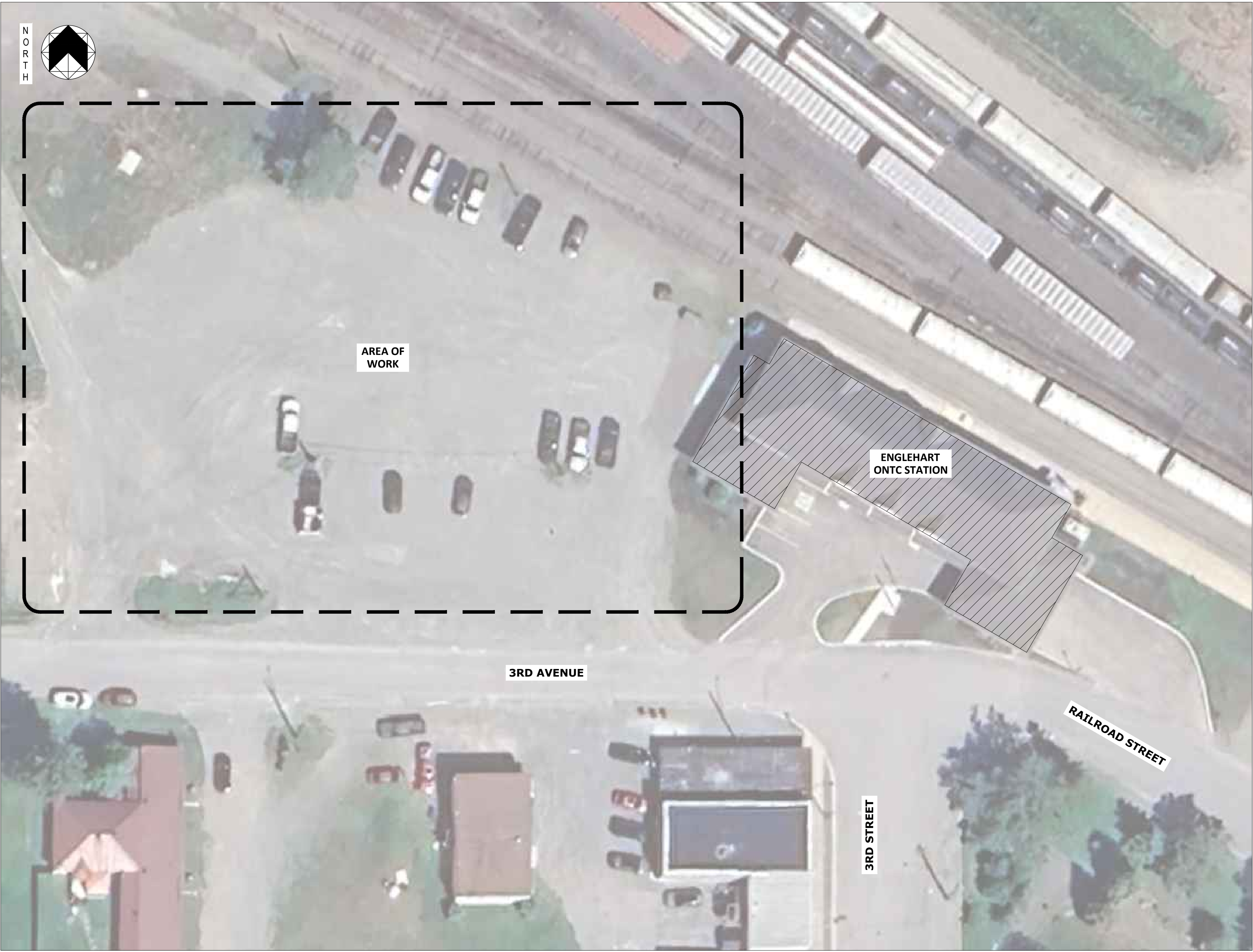
Thank you

Appendix “B”

ONTARIO NORTHLAND TRANSPORTATION COMMISSION

ENGLEHART, ON P0J 1H0
ENGLEHART STATION PARKING LOT ELECTRICAL UPGRADES
PRO-25-157

ISSUED FOR (INSERT)
(DATE ISSUED)



KEY PLAN
SCALE: N.T.S.

DRAWING LIST			
GENERAL			
G0000	COVER PAGE, DRAWINGS LIST, AND GENERAL NOTES		
ELECTRICAL			
E100	SITE PLAN		
E200	DETAILS, DIAGRAMS, & SCHEDULES		
ABBREVIATIONS			
Abbrev.	Term	Abbrev.	Term
ACP	Aluminum Composite Panel	GA	Gauge
ADJ	Adjustable	GA/V	Galvanized
ABF	Above Finished Floor	GB	Gypsum Board
ALUM	Aluminum	GL	Glass, Glazed, Glazing
APPD	Approved	G/L	Gridline
APPROX	Approximate	G/SB	Gypsum Sheathing Board
ARCH	Architecture, Architectural	GT	Glass Tile
AT	Acoustic Ceiling Tile	GTB	Gypsum Wallboard
ANP	Acoustic Wall Panel		
B	Base Board	H/CAP	Handicap
BCS	Baby Change Station	HM	Hollow Metal
BD	Board	HR	Horizontal
B/H	Bulkhead	HRIZ	Handrail
BLDG	Building	INSUL	Insulation
BLKG	Blocking	IP	Intumescent Paint
BPG	Back Painted Glass		
B/S	Both Sides	JT	Joint
BSMT	Basement		
BU	Built Up	LF	Laminate Flooring
BUR	Built-up Roofing		
C	Carpet	MENB	Membrane
CB	Concrete Block	MEZZ	Mezzanine
CCH	Concrete w/ Hardener	MISC	Miscellaneous
CH	Coat Hook	MTL	Metal
CG	Corner Guards	NIC	Not in Contract
CHS	Concrete w/ Hardener & Sealer	NTS	Not to Scale
CIP	Cast-in-Place	O/C	On Centre
C/J	Construction Joint or Control	OSB	Oriented Strand Board
C/L	Center Line	P	PRO CLEAN TILE
CLG	Ceiling	PL	Plastic Laminate
CO	Clean out	PLYWD	Plywood
COL	Column	POLY	Polyethylene
CON	Concrete	PSF	Pressed Steel Frame
CONC	Concrete	PT	Paint
CONST	Construction	P/T	Pressure Treated
CONSTR	Construction	QZ	Quartz
CP	Cement Plaster		
CPL	Composite Panel	RB	Rubber Base
CPT	Carpet Tile	RD	Roof Drain
CS	Concrete w/ Sealer	REINF	Reinforce
CT	Ceramic Tile	REQ'D	Required
C/W	Complete With	RF	Rubber Flooring
DTL	Detail	RFG	Recessed Floor Grille
DA or Ø	Diameter	R/O	Rough Opening
DN	Down	RT	Rubber Treads
DWG	Drawing	RWL	Rainwater Leader
DWS	Demountable Wall System	SF	Sheet Flooring
E/W	Each Way	SHTHG	Sheathing
EA	Each	SIM	Similar
EJ	Expansion Joint	SPEC	Specification
EL	Elevations (above datum)	SS	Stainless Steel
ELEC	Electric or Electrical	ST	Steel
ELEV	Elevation	STRUCT	Structural
EP	Epoxy Paint	SUSP	Suspend (ed)
EQ	Equal	TB	Tackboard
ES	Exposed Structure	TEMP	Temporary
EXT	Exterior	T/O	Top of
EXIST	Existing	TYP	Typical
FD	Floor Drain	UNO	Unless Noted Otherwise
FEC	Fire Extinguisher Cabinet	U/S	Underside
FIN	Finish		
FL	Floor	VB	Vapour Barrier
FLX	Flexible	VCT	Vinyl Composite Tile
FLR	Floor		
FPRE	Fireproof	WB	Whiteboard
F/S	Fire-Stop	WD	Wood
		W/R	Washroom
		W/	With

GENERAL REQUIREMENTS	
1.	CONTRACTOR TO REVIEW AND REPORT ANY DISCREPANCIES, OMISSIONS OR CONFLICTS TO THE CONSULTANT PRIOR TO COMMENCING THE WORK.
2.	TYPICAL DETAILS REPRESENT STRUCTURAL INTENT AND MAY NOT REFLECT EXACT ON-SITE CONDITIONS.
3.	CONTRACTOR IS NOT TO PROCEED WITH ANY CHANGES OR MODIFICATIONS TO THE DESIGN UNLESS REVISED AND APPROVED BY PROSPEC ENGINEERING LTD. LTD.
4.	THE GENERAL CONTRACTOR IS RESPONSIBLE FOR SUPPLYING ALL NECESSARY MATERIALS AND LABOR TO COMPLETE THE WORK.
5.	DO NOT CUT, DRILL, OR ALTER ANY STRUCTURAL MEMBERS UNLESS EXPLICITLY INDICATED ON THE DRAWINGS OR APPROVED IN WRITING BY PROSPEC ENGINEERING LTD.
6.	COORDINATE ALL TRADES TO AVOID CONFLICTS WITH STRUCTURAL ELEMENTS. ANY INTERFERENCES TO BE BROUGHT TO THE ATTENTION OF THE CONSULTANT.
CODES AND STANDARDS	
GENERAL CONTRACTOR SHALL:	
1.	COMPLY WITH THE REQUIREMENTS OF THE ONTARIO BUILDING CODE AND ALL OTHER APPLICABLE AUTHORITIES HAVING JURISDICTION.
2.	MEET OR EXCEED THE REQUIREMENTS OUTLINED IN THE CONTRACT DOCUMENTS, INCLUDING ALL SPECIFIED STANDARDS, APPLICABLE CODES AND REFERENCE DOCUMENTATION.
3.	ADHERE TO THE ONTARIO OCCUPATIONAL HEALTH AND SAFETY ACT AND ITS REGULATIONS FOR CONSTRUCTION PROJECTS.

DESIGN DATA	
1.	THE STRUCTURAL DESIGN HAS BEEN PREPARED IN ACCORDANCE WITH THE ONTARIO BUILDING CODE 2025, SUPPLEMENTED BY THE USER'S GUIDE - NBC 2010 STRUCTURAL COMMENTARIES (PART 4 OF DIVISION B).
1.1.	CLIMATIC DESIGN DATA IS BASED ON THE LOCATION OF ENGLEHART, ONTARIO.

SHOP DRAWING AND QUALITY CONTROL	
1.	APPROVED EQUAL OR ALTERNATE ARE TO BE SUBMITTED DURING TENDER ONLY. NOTHING AFTER WILL BE CONSIDERED.

PERMITS AND INSPECTIONS	
1.	THE CONTRACTOR IS REQUIRED TO OBTAIN AND PAY FOR ALL REQUIRED BUILDING PERMITS AND ASSOCIATED INSPECTIONS.

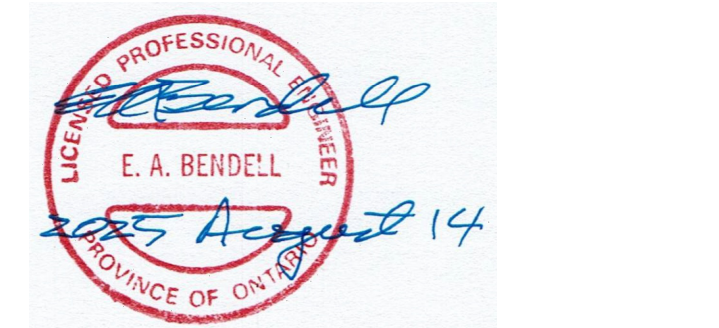
TEMPORARY WORKS	
1.	IT IS THE CONTRACTORS RESPONSIBILITY TO DETERMINE, DESIGN, AND IMPLEMENT ALL TEMPORARY WORKS NECESSARY TO SAFELY COMPLETE THE CONSTRUCTION.
2.	CONSTRUCTION LOADS SHALL NOT EXCEED THE DESIGN LOADS INDICATED ON THE DRAWING.
3.	THE CONTRACTOR IS RESPONSIBLE FOR ENSURING THAT ALL TEMPORARY WORKS ARE DESIGNED AND REVIEWED BY A PROFESSIONAL ENGINEER LICENSED AND INSURED TO PRACTICE IN ONTARIO.

EXISTING STRUCTURES	
1.	VERIFY ALL EXISTING CONDITIONS AND DIMENSIONS PRIOR TO COMMENCING CONSTRUCTION.
2.	TAKE ALL NECESSARY PRECAUTIONS TO PROTECT THE EXISTING STRUCTURE THROUGHOUT THE DURATION OF CONSTRUCTION.
3.	ENSURE ALL REQUIRED TEMPORARY SHORING AND BRACING IS PROPERLY INSTALLED AND REMOVED IN A MANNER THAT MAINTAINS THE INTEGRITY OF THE EXISTING STRUCTURE.
4.	REPORT ANY DISCREPANCIES OR VARIATIONS IN EXISTING CONDITIONS TO CONSULTANT PRIOR TO PROCEEDING WITH THE WORK.
5.	ANY DAMAGE TO THE EXISTING STRUCTURES OR SERVICES CAUSED BY THE CONTRACTOR'S OPERATIONS SHALL BE REPAIRED AT THE CONTRACTOR'S EXPENSE, TO THE SATISFACTION OF THE CONSULTANT.

EXISTING CONDITIONS	
1.	TERM "MAKE GOOD" TO MEAN: REPAIR AND RESTORE ALL EXISTING FLOORS, WALLS, CEILINGS, AND OTHER EXPOSED SURFACES INCLUDING BUT NOT LIMITED TO PAINT, TRIM, WALL COVERINGS, BASEBOARDS, FLOORING, AND OTHER ARCHITECTURAL OR DECORATIVE FINISHES DAMAGED OR DISTURBED BY THIS WORK. PERFORM CUTTING AND PATCHING AS REQUIRED. FINISHED SURFACES SHALL MATCH AND ALIGN WITH ADJACENT EXISTING CONDITIONS. RESTORE SITE TO CONDITION EQUAL TO OR, IF SPECIFIED ELSEWHERE, TO CONDITION BETTER THAN EXISTING CONDITIONS.

ELECTRICAL NOTES	
1.	THE ELECTRICAL CONTRACTOR SHALL BE HELD TO HAVE VISITED THE SITE PRIOR TO BID SUBMISSION AND TO HAVE EXAMINED ALL CONDITIONS AFFECTING THE WORK. NO CLAIMS FOR EXTRA WORK RELATING TO EXISTING CONDITIONS THAT WERE VISIBLE OR REASONABLY INFERRABLE PRIOR TO THE START OF DEMOLITION OR CONSTRUCTION WILL BE ACCEPTED.
2.	ALL WORK SHALL COMPLY WITH THE LATEST EDITIONS OF THE ONTARIO ELECTRICAL SAFETY CODE, AND OTHER RELEVANT CODES AND STANDARDS.
3.	THE ELECTRICAL CONTRACTOR SHALL OBTAIN AND PAY FOR ELECTRICAL PERMIT AND ARRANGE FOR INSPECTIONS BY THE ELECTRICAL SAFETY AUTHORITY. PROVIDE A TRUE COPY OF CERTIFICATE OF FINAL INSPECTION TO CONSULTANT ON COMPLETION OF WORK.
4.	THE ELECTRICAL CONTRACTOR SHALL COORDINATE WITH HYDRO ONE FOR THE WORK RELATED TO RELOCATING THE EXISTING PARKING LOT SERVICE (AS SHOWN).
5.	THE ELECTRICAL CONTRACTOR SHALL BE RESPONSIBLE FOR ELECTRICAL SAFETY DURING ALL PHASES OF DEMOLITION AND CONSTRUCTION. AT ALL TIMES THE WIRING SHALL BE IN A SAFE CONDITION.
6.	THE ELECTRICAL CONTRACTOR SHALL WARRANT HIS WORK FOR A PERIOD OF ONE FULL YEAR FROM THE DATE OF SUBSTANTIAL COMPLETION.
7.	EXTRA CHARGES:
a.	ANY DISCREPANCIES OR OMISSIONS DISCOVERED SHALL BE REPORTED TO THE CONSULTANT IMMEDIATELY AND PRIOR TO TENDER CLOSING FOR RECTIFICATION BY ADDENDUM.
b.	IT IS THE RESPONSIBILITY OF THE ELECTRICAL CONTRACTOR TO REVIEW THE PROPOSED EQUIPMENT AND LIGHTING FIXTURES TO BE SUPPLIED AGAINST THESE DRAWINGS TO ENSURE THAT QUALITY AND QUANTITIES CONFORM TO THE TENDER DOCUMENTS.
8.	PROVIDE SHOP DRAWINGS FOR REVIEW BY CONSULTANT PRIOR TO PURCHASE OF ELECTRICAL COMPONENTS.
9.	THE OWNER RESERVES THE RIGHT TO CHANGE THE LOCATION OF ANY ELECTRICAL DEVICE BY UP TO 10 FEET WITHOUT ADDITIONAL CHARGE, PROVIDED THAT THE CHANGE IS MADE PRIOR TO THE INSTALLATION OF THE ITEM.
10.	FOR THE LIGHT FIXTURES SPECIFIED, PROVIDE OWNER WITH ONE WATTSTOPPER FSR-100 CONFIGURATION TOOL. CONFIGURE DELAY-TO-DIM PARAMETER OF ALL FIXTURES TO 15 MINUTES OR AS INSTRUCTED BY OWNER.
11.	ALL MATERIALS SHALL BE CSA APPROVED. WHERE THERE IS NO ALTERNATIVE TO PROVIDING MATERIALS THAT ARE NOT CSA APPROVED, THE CONTRACTOR SHALL OBTAIN AND PAY FOR SPECIAL APPROVAL OF THE ELECTRICAL SAFETY AUTHORITY.
12.	ALL WIRING TO BE COPPER. NO EXCEPTIONS WILL BE ALLOWED WITHOUT PRIOR WRITTEN DIRECTION FROM THE CONSULTANT.
13.	ALL WIRING TO BE TYPE RW90 IN TYPE DB2 CONDUIT (IN RIGID PVC WHERE EXPOSED TO SUNLIGHT), UNLESS OTHERWISE NOTED. MINIMUM POWER CONDUCTOR SIZE #12 AWG. SIZE CONDUCTORS TO CIRCUIT AMPACITY, CONDUIT FILL, AND TO MAINTAIN VOLTAGE DROP FROM SOURCE TO LOAD TO UNDER 3%.
14.	AUTOMOTIVE RECEPTACLES SHALL BE TEMPERATURE CONTROLLED TYPES, EQUAL TO IPLC TYPE M210, MOUNTED ON HORIZONTAL TYPE FS CAST ALUMINUM BOX WITH WEATHERPROOF COVER PLATE (SEE BELOW). PROVIDE OWNER WITH ONE RECEPTACLE PROGRAMMER, EQUAL TO IPLC DATA-MATE.
15.	WEATHERPROOF COVER PLATES SHALL BE EXTRA-DUTY TYPE AND SHALL MAINTAIN TYPE 3R RATING, WHETHER OR NOT THE RECEPTACLE IS IN USE. EQUAL TO INTERMATIC WP5000 OR WP1010 SERIES.
16.	PROVIDE EMPTY BURIED CONDUITS WITH FISH CORDS FOR FUTURE EV CHARGERS. SECURELY CAP BOTH ENDS, AND PROVIDE MARKERS FOR EASY LOCATION OF THESE CONDUITS IN THE FUTURE. SEE DETAILS.
17.	PROVIDE EMPTY BURIED CONDUITS WITH FISH CORDS FOR FUTURE CAMERA SYSTEM AS SHOWN. SECURELY CAP BOTH ENDS.
18.	FISH CORDS TO BE 1/2" POLYESTER TAPE.
19.	PROVIDE NEW TYPEWRITTEN SCHEDULES FOR ALL PANELS AFFECTED BY THIS WORK.
20.	PROVIDE WEATHERPROOF PADLOCK AND RELATED HARDWARE FOR THE EXISTING ENCLOSURE FOR L.P.R. WEATHER SEAL ALL ABANDONED OPENINGS IN THIS ENCLOSURE.
21.	IDENTIFY NEW ELECTRICAL EQUIPMENT (PANELS AND JUNCTION BOXES) WITH SECURELY FASTENED BLACK LAMICOID NAMEPLATE WITH 3/8" ENGRAVED WHITE LETTERS. ADHESIVE ATTACHMENTS ARE NOT PERMITTED.
22.	SUBMIT 1 ELECTRONIC COPY OF OPERATING AND MAINTENANCE MANUALS TO CONSULTANT FOR APPROVAL. SUBMIT 3 FINAL HARD COPIES TO OWNER THROUGH THE CONSULTANT. MANUALS SHALL CONTAIN:
a.	AN INDEX PAGE,
b.	A LIST OF SUPPLIERS NAMES, ADDRESSES AND TELEPHONE NUMBERS,
c.	OPERATING AND MAINTENANCE INSTRUCTIONS FOR ALL EQUIPMENT,
d.	COPIES OF TEST CERTIFICATES AND FINAL ESA INSPECTION CERTIFICATE,
e.	A COMPLETE SET OF REVIEWED SHOP DRAWINGS, AND
f.	A COMPLETE SET OF AS-BUILT DRAWINGS (SEE BELOW).
23.	PROVIDE CLEARLY MARKED AS-BUILT DRAWINGS TO CONSULTANT ON COMPLETION OF WORK. COLOUR CODE ALL CHANGES FROM DRAWINGS USING RED FOR ADDITIONS AND GREEN FOR DELETIONS. INCLUDE A COPY OF THE AS-BUILT DRAWINGS IN THE OPERATION AND MAINTENANCE MANUAL.

ELECTRICAL LEGEND	
SYMBOL	DESCRIPTION
	ELECTRICAL PANEL. REFER TO PANEL SCHEDULE
	LIGHT FIXTURE (POLE MOUNTED) REFER TO FIXTURE SCHEDULE.
	LIGHT FIXTURE (WALL MOUNTED) REFER TO FIXTURE SCHEDULE.
	DUPLEX RECEPTACLE - TYPE S-15R
	HYDRO METER
	JUNCTION BOX
	FUTURE EV CHARGING STATION



SIGN & SEAL

PROSPEC
ENGINEERING & ARCHITECTURE

2502 ELM STREET
GREATER SUBURBY, ON, P3E 4P8
172 ALGONQUIN BOULEVARD EAST
TIMMINS, ON, P4N 1A9
sales@prospeceng.com | 1-705-885-9040

GENERAL NOTES	
THE CONTRACTOR IS REQUIRED TO VERIFY ALL MEASUREMENTS AND DIMENSIONS PRIOR TO CONSTRUCTION ANY ERROR OR OMISSION MUST BE REPORTED TO PROSPEC ENGINEERING AND THE RELEVANT PROFESSIONAL BEFORE PROCEEDING WITH THE WORK.	
THIS DRAWING MAY ONLY BE USED FOR CONSTRUCTION PURPOSES AFTER BEING DULY APPROVED BY THE RELEVANT PROFESSIONAL.	
ALL WORK AND INSTALLATIONS MUST COMPLY WITH APPLICABLE CODES, INCLUDING BUT NOT LIMITED TO: THE ONTARIO BUILDING CODE AND ALL REGULATIONS AND VARIANCES ISSUED BY THE RELEVANT MUNICIPALITY.	
ALL PLANS, DRAWINGS, AND SPECIFICATIONS REMAIN THE PROPERTY OF PROSPEC ENGINEERING LTD. AND MAY NOT BE ALTERED OR USED FOR ANY OTHER PROJECT WITHOUT THE WRITTEN APPROVAL.	
DO NOT SCALE DRAWINGS	

PRO-25-157
ENGLEHART
STATION PARKING
LOT ELECTRICAL
UPGRADES
ENGLEHART, ON P0J 1H0

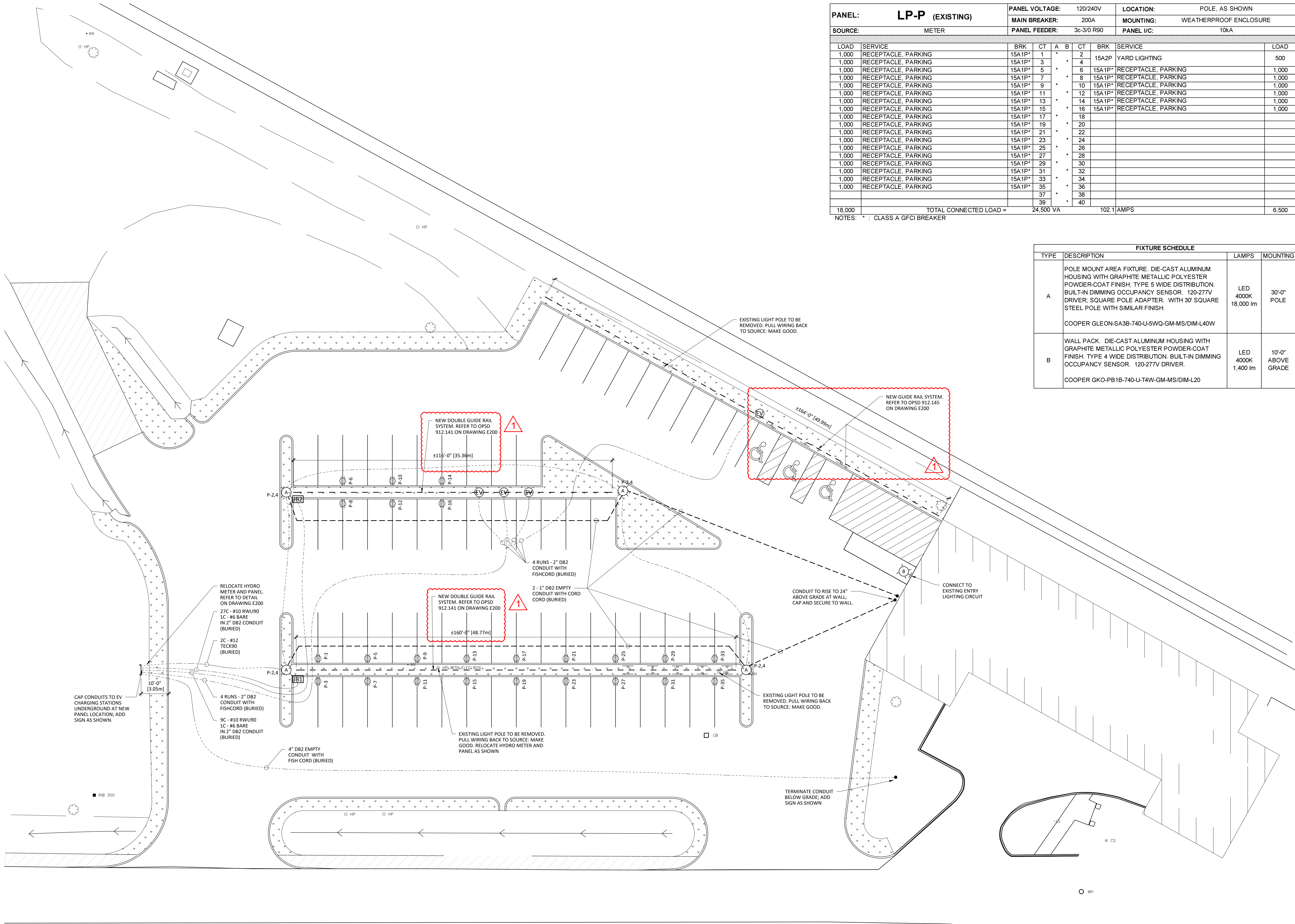
DIRECTORY
ONTARIO NORTHLAND - ABIGALE GREEN
EMAIL - Abigale.Green@ontarionorthland.ca

NO.	DATE	DESCRIPTION
0	2025/07/25	ISSUED FOR CONSTRUCTION
1	2025/08/13	REVISED GUIDE RAIL SYSTEM

COVER PAGE, DRAWINGS
LIST, AND GENERAL NOTES

DRAWN BY:	KT
CHECKED BY:	TB
APPROVED BY:	TB
SCALE:	AS NOTED
SHEET	

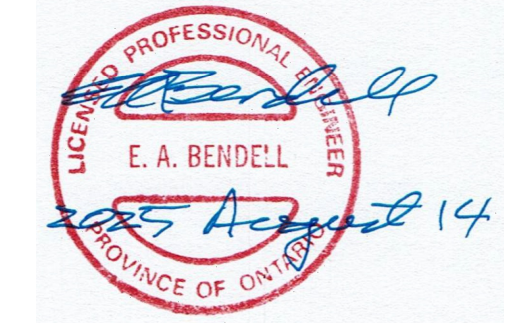
G000



PANEL: LP-P (EXISTING)		PANEL VOLTAGE: 120/240V				LOCATION: POLE, AS SHOWN			
		MAIN BREAKER: 200A				MOUNTING: WEATHERPROOF ENCLOSURE			
SOURCE: METER		PANEL FEEDER: 3c-3/0 R90				PANEL I/C: 10kA			
LOAD	SERVICE	BRK	CT	A	B	CT	BRK	SERVICE	LOAD
1,000	RECEPTACLE, PARKING	15A1P*	1	*		2			
1,000	RECEPTACLE, PARKING	15A1P*	3	*		4	15A2P	YARD LIGHTING	500
1,000	RECEPTACLE, PARKING	15A1P*	5	*		6	15A1P*	RECEPTACLE, PARKING	1,000
1,000	RECEPTACLE, PARKING	15A1P*	7	*		8	15A1P*	RECEPTACLE, PARKING	1,000
1,000	RECEPTACLE, PARKING	15A1P*	9	*		10	15A1P*	RECEPTACLE, PARKING	1,000
1,000	RECEPTACLE, PARKING	15A1P*	11	*		12	15A1P*	RECEPTACLE, PARKING	1,000
1,000	RECEPTACLE, PARKING	15A1P*	13	*		14	15A1P*	RECEPTACLE, PARKING	1,000
1,000	RECEPTACLE, PARKING	15A1P*	15	*		16	15A1P*	RECEPTACLE, PARKING	1,000
1,000	RECEPTACLE, PARKING	15A1P*	17	*		18			
1,000	RECEPTACLE, PARKING	15A1P*	19	*		20			
1,000	RECEPTACLE, PARKING	15A1P*	21	*		22			
1,000	RECEPTACLE, PARKING	15A1P*	23	*		24			
1,000	RECEPTACLE, PARKING	15A1P*	25	*		26			
1,000	RECEPTACLE, PARKING	15A1P*	27	*		28			
1,000	RECEPTACLE, PARKING	15A1P*	29	*		30			
1,000	RECEPTACLE, PARKING	15A1P*	31	*		32			
1,000	RECEPTACLE, PARKING	15A1P*	33	*		34			
1,000	RECEPTACLE, PARKING	15A1P*	35	*		36			
			37	*		38			
			39	*		40			
18,000	TOTAL CONNECTED LOAD =		24,500 VA		102.1 AMPS		6,500		

NOTES: * : CLASS A GFCI BREAKER

FIXTURE SCHEDULE			
TYPE	DESCRIPTION	LAMPS	MOUNTING
A	POLE MOUNT AREA FIXTURE. DIE-CAST ALUMINUM HOUSING WITH GRAPHITE METALLIC POLYESTER POWDER-COAT FINISH; TYPE 5 WIDE DISTRIBUTION. BUILT-IN DIMMING OCCUPANCY SENSOR. 120-277V DRIVER; SQUARE POLE ADAPTER WITH 30" SQUARE STEEL POLE WITH SIMILAR FINISH. COOPER GLEON-SA3B-740-U-5WQ-GM-MS/DIM-L40W	LED 4000K 18,000 lm	30'-0" POLE
B	WALL PACK. DIE-CAST ALUMINUM HOUSING WITH GRAPHITE METALLIC POLYESTER POWDER-COAT FINISH. TYPE 4 WIDE DISTRIBUTION. BUILT-IN DIMMING OCCUPANCY SENSOR. 120-277V DRIVER. COOPER GKO-PB1B-740-U-T4W-GM-MS/DIM-L20	LED 4000K 1,400 lm	10'-0" ABOVE GRADE



SIGN & SEAL

PROSPEC
ENGINEERING & ARCHITECTURE

2502 ELM STREET
GREATER SUBURBY, ON, P3E 4P8
172 ALGONQUIN BOULEVARD EAST
TIMMINS, ON, P4N 1A9
sales@prospeceng.com | 1-705-885-9040

GENERAL NOTES

THE CONTRACTOR IS REQUIRED TO VERIFY ALL MEASUREMENTS AND DIMENSIONS PRIOR TO CONSTRUCTION ANY ERROR OR OMISSION MUST BE REPORTED TO PROSPEC ENGINEERING AND THE RELEVANT PROFESSIONAL BEFORE PROCEEDING WITH THE WORK.

THIS DRAWING MAY ONLY BE USED FOR CONSTRUCTION PURPOSES AFTER BEING DULY APPROVED BY THE RELEVANT PROFESSIONAL.

ALL WORK AND INSTALLATIONS MUST COMPLY WITH APPLICABLE CODES, INCLUDING BUT NOT LIMITED TO: THE ONTARIO BUILDING CODE AND ALL REGULATIONS AND VARIANCES ISSUED BY THE RELEVANT MUNICIPALITY.

ALL PLANS, DRAWINGS, AND SPECIFICATIONS REMAIN THE PROPERTY OF PROSPEC ENGINEERING LTD. AND MAY NOT BE ALTERED OR USED FOR ANY OTHER PROJECT WITHOUT THE WRITTEN APPROVAL.

DO NOT SCALE DRAWINGS

PRO-25-157

ENGLEHART
STATION PARKING
LOT ELECTRICAL
UPGRADES
ENGLEHART, ON P0J 1H0

DIRECTORY

ONTARIO NORTHLAND - ABIGALE GREEN
EMAIL - Abigale.Green@ontarionorthland.ca

NO.	DATE	DESCRIPTION
0	2025/07/25	ISSUED FOR CONSTRUCTION
1	2025/08/14	REVISED GUIDE RAIL SYSTEM

SITE PLAN

DRAWN BY:	KT
CHECKED BY:	TB
APPROVED BY:	TB
SCALE:	AS NOTED
SHEET	

E100



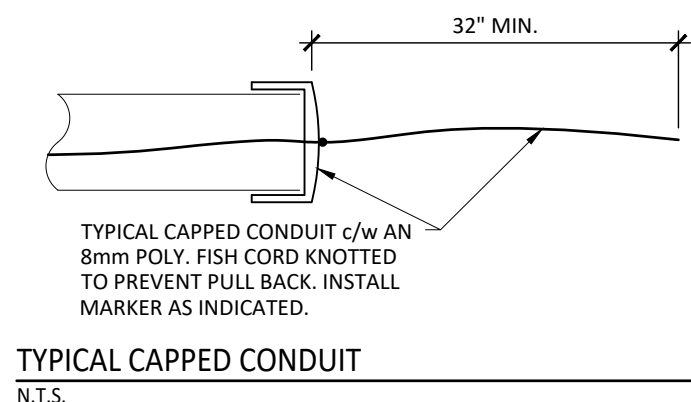
2502 ELM STREET
GREATER SUDBURY, ON, P3E 4P8
172 ALGONQUIN BOULEVARD EAST
TIMMINS, ON, P4N 1A9
sales@prospecceng.com | 1-705-885-9040

DO NOT SCALE DRAWINGS

ONTARIO NORTHLAND - ABIGALE GREEN
EMAIL - Abigale.Green@ontarionorthland.ca

REVISION

1



E200